

Odometer check
Report time and location
Start/Finish time and location
Instructions for scrutiny
Any additional information or change deemed necessary by the organisers.

17. ALTERATION OR ABANDONMENT.

The organisers reserve the right to postpone, alter or abandon the event in accordance with the NCR, Victorian Rally Bulletins, and by the Department of Conservation & Environment and the Victorian Plantations Corporation.

18. SPECTATORS.

A spectator guide will be available during the week prior to the event and at the start location.

19. AWARDS.

19.2. Trophies will be awarded as follows:

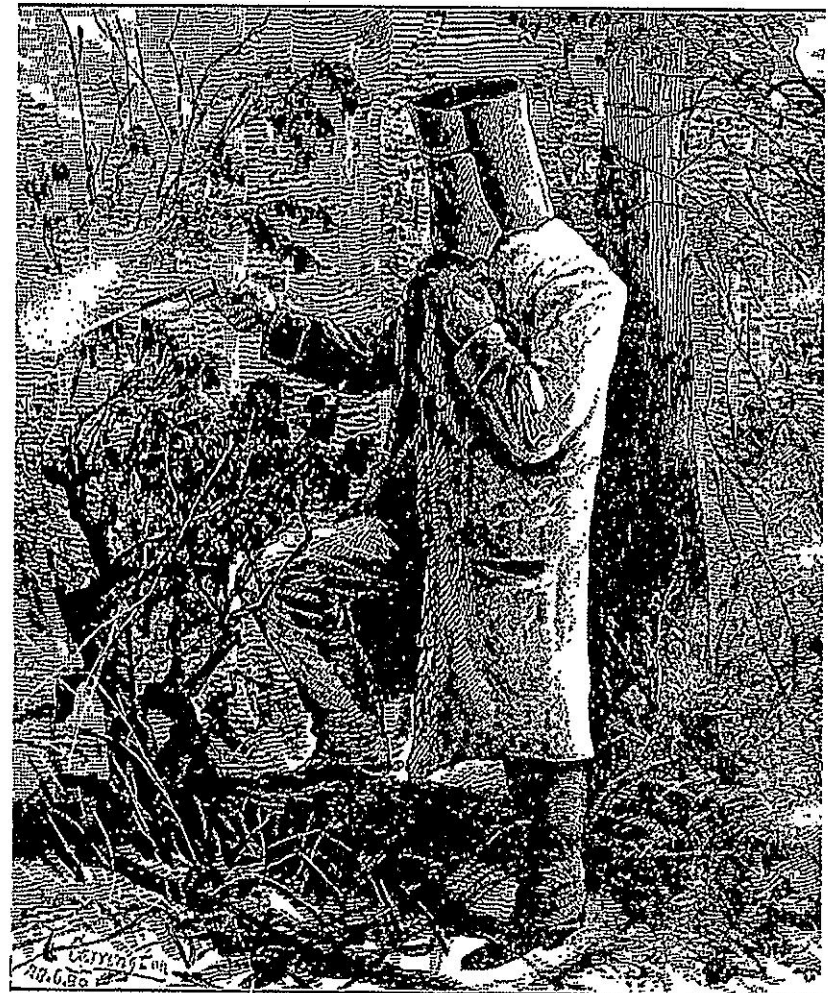
- * 1st, 2nd and 3rd Outright
- * 1st, 2nd and 3rd Historic Rally Car
- * Hard Luck award

Further awards will be specified in the Further Instructions.

KELLY COUNTRY



TRIAL 1998



"Reliving a part of history"

SUPPLEMENTARY REGULATIONS 1998 KELLY COUNTRY TRIAL

1. SCHEDULE OF DATES

| | | | |
|-----------------------------|----------|-----------|--------------|
| Date of Event | Saturday | July 11th | |
| Entries Open | Monday | June 1st | |
| Entries Close For Draw | Friday | July 3rd | |
| Further Instructions Posted | Monday | July 6th | |
| Wangaratta Scrutiny | Thursday | July 9th | 7 - 9pm. |
| Start of Event | Saturday | July 11th | 4pm approx. |
| Finish Of Event | Saturday | July 11th | 11pm approx. |

2. THE EVENT

The event will be a Multi-Club non-special stage Trial to be known as the "1998 Kelly Country Trial", and will be conducted on public roads on Saturday, July 11th, 1998.

3. AUTHORITY

The event will be conducted under the provisions of the International Sporting Code of the Federation Internationale de L'Automobile (FIA), the National Competition Rules (NCR) of CAMS Limited (CAMS), the National Rally Code (NRC), the Victorian Rally bulletin, these Supplementary Regulations and any further regulations, bulletins, instructions and route instructions which may be issued by the Organising Committee.

The CAMS Permit Number authorizing this event is V98/1107/01.

The Event Permit will be prominently displayed at the start of the event.

4. THE ORGANISERS

The event will be organised and promoted by the North Eastern Car Club Incorporated, P.O. Box 138, Wangaratta 3676.

The organising committee is:

DIRECTOR

Peter Whitten
8 Millard Street
Wangaratta 3677
Ph: (03) 57221250 bh (03) 57223523 ah

ASSISTANT DIRECTOR

Jeff Whitten
P.O. Box 784
Wangaratta 3676
Ph: (03) 57221250

EVENT SECRETARY

Clare Whitten
(address as for Director)

CHIEF SCRUTINEER

Laurie Weston

5. CAMS OFFICIALS

CHECKER

Stuart Lister

AREA CO-ORDINATOR

Mick Fitzgerald

STEWARDS

Bill Aggenbach, Noel Cutler

RALLY PANEL STEWARD

Michael Cains

6. ENTRIES AND CREW ELIGIBILITY

6.1 All competitors holding a CAMS Basic Licence or superior are eligible to compete. The CAMS licences and club membership cards of both crew members, the entrant, and the driver's civil licence must all be presented to the organisers prior to the start. Each crew shall consist of two people, one to be nominated as the driver and the other as the co-driver.

6.2 Entries will open on June 1st, 1998 and will close for the ballot for starting positions on Friday, July 3rd.

6.3 The entry fee will be \$100.00. Cheques are to be made payable to the North Eastern Car Club Inc., P.O. Box 138, Wangaratta 3676.

CAMS Personal Accident Insurance for both crew members will be provided.

6.4 All entries must be on the official entry form, which forms part of these Supplementary Regulations, and must be complete in every detail.

6.5 The field will be limited to 50 crews, accepted in order of receipt.

6.6 Should any entry not be accepted, the entry fee will be refunded in full. The entry fee for any entry withdrawn prior to the close of entries will also be refunded in full. Any entry withdrawn between close of entries and the start of the event will receive a refund of 80% of entry fee.

6.7 The Organisers reserve the right to refuse any entry at their discretion and in accordance with NCR 83.

7. STARTING ORDER.

7.1 The starting order for the event will be determined by ballot in order of the competitor gradings. Eg: Grade 2, then Grade 3, etc. Crew grading will be determined by the driver's grade only.

7.2. Both members of the crew plus at least one member of their service crew must attend Driver's Briefing at the start on Saturday, July 11th at 3pm.

8. VEHICLE ELIGIBILITY.

All vehicles must comply with schedules A and R of the National Rally Code, and must have the following items: mud flaps on all driven wheels, fire extinguishers with a capacity of 2kg if dry powder, first aid kit and safety triangles.

The event is open to the following class of vehicles :

1. Production Rally Cars (PRC)
2. Group N
3. Historic Rally Cars
4. Other road registered vehicles

In accordance with NCR 150, all vehicles must be subject of a CAMS Log Book.

N.B. Entrants must clearly indicate on their entry form in which class they are competing.

9. CREW CONDUCT.

9.1 Practising and/or reconnaissance by competitors on the roads in the general area of the event is expressly forbidden for a period of 4 weeks prior to the start of the event. Any infringement of this regulation will be subject to the maximum penalty possible ie: exclusion from the event.

9.2 Competitors are reminded that transport sections on this event will be on roads open to the public at all times. All transport sections will be subject to a maximum speed limit of 80kph on roads with a non-bitumen surface unless a lower maximum speed is nominated in the Further Instructions or Route Instructions. In some instances roads with a bitumen surface will also have a nominated max. speed limit which is lower than the usual legal speed limit.

9.3. Competitors are reminded of the bush fire dangers and of civil penalties for throwing lighted matches, cigarettes, etc, from vehicles, and for entering forest areas with a faulty or damaged exhaust.

9.4 In the event of the vehicle stopping on a competitive stage the crew must immediately display two reflective triangles in a prominent position such that following competitors receive adequate warning of the stationary vehicle.

9.5 Notes, in any form other than the official route instructions or maps issued by the organisers, will not be permitted.

10. SCRUTINY.

10.1. Every vehicle will be required to be submitted for examination by the scrutineers prior to the start of the event and, on being passed by the scrutineers, will receive a signed scrutiny slip which must be presented to the start officials.

10.2. Official scrutiny will be held at Motor Steer, Vincent Road Wangaratta between the hours of 7.00pm and 9.00pm on Thursday, July 9th, 1998. Any entrant who cannot attend must be scrutinised by either a regional scrutineer or a Grade 2 scrutineer. Entrants who cannot attend official scrutiny must notify the organisers of their intentions regarding scrutiny.

10.3. Attention will be paid to the exhaust system of the vehicle. Any vehicle exceeding 96 dB(A) when tested in accordance with the procedure specified in the CAMS Manual 1998, will not be allowed to start.

10.4. The Chief Scrutineer and his assistants are deemed to be judges of fact in all scrutiny matters.

10.5. Competing vehicles must be presented at scrutiny and at the start of the event in a clean and tidy condition. Any vehicle deemed by the organisers to be dirty or untidy will not be allowed to start.

10.6. At the finish of the event the winning cars in each category may be impounded for the period of 1 hour for post-event scrutiny.

10.7. A white area measuring 500mm wide by 520mm high on each front door must be available to display the vehicle's competition number and any advertising decals which may be provided by the organisers.

11. RUNNING DETAILS.

The event will consist of approximately 300km of competitive distance. Long stages of around 60km will not be uncommon in order to minimise the number of control officials required. There will be at least two refuel breaks where pump fuel will be available.

12.0. OFFICIAL MAPS.

Official maps will be specified in the Further Instructions. Only maps specified in the Further Instructions may be carried in competing vehicles.

13. CONTROLS AND TIMING.

13.1 Timing and Controls will be in accordance with the National Rally Code and the Victorian Rally Bulletin. Scoring will be to the forward quarter minute. The event will use the Victorian Rally clocks.

14. PENALTIES AND RESULTS.

14.1. Any protest must be lodged in accordance with Article 5.7 of the NRC.

14.2. The Director reserves the right, when compiling results, to take into account any document(s) provided by an official or officials of the event.

15. SERVICE CREWS.

15.1. The entry fee includes 1 service crew registration provided such service crews are nominated in full with the entry. Registration of service crews is necessary in order that they will be covered by the Insurance of the event.

15.2. Service crew instructions will be detailed and will not require supporting maps. Each competing crew will receive a comprehensive set of instructions for the service crew which will include details of the official service areas and maps of the event.

16. FURTHER INSTRUCTIONS:

Further Instructions will be issued after the start order is determined and will contain:

Competitor number
List of competitors