

YE OLDE

BP RALLY

No.2

February 3-4-5,
1984

Route Instructions
Division I



RALLY STAGE

MAP: 301

CONTROL: BARINGO PICNIC GROUNDENTRY: From the SOUTH-SOUTH WEST.

- VIA:
1. The following Route Chart from the START:
 - 0.00 T.R. across divided road
 - 0.20 S.O. SP Brunswick Road.
 - 0.65 T.R. SP Brunswick Road.
 - 0.85 STOP, then T.L. into Royal Pde.
 - 1.25 S.O. at traffic lights.
 - 1.40 T.L. SP Brunswick Rd. Follow Brunswick Road until:
 - 3.40 S.O. at traffic lights.
 - 3.50 T.R. SP Airport.
 - 3.90 Join Freeway with CAUTION. Stay on Freeway until:
 - 10.10 Keep Left to "AIRPORT" lanes.
 - 10.90 B.L. SP Airports. Stay on Freeway until:
 - 19.00 K.R. SP Sunbury.
 - 23.80 T.R. SP Hume Highway.
 - 25.40 OBSERVATION 1 REQUIRED: What is written on the sign under the words "Shire of Bulla"
 - 25.50 End of Route Chart. You are at the mapped junction 4 km West of GREENVALE. Proceed to VIA 2.
 2. Junction 6 km South of FENTONA. Enter from EAST. OBSERVATION 2 REQUIRED: What is the distance to SUNBURY as shown on the signpost at this junction?
 3. FENTONA. OBSERVATION 3 REQUIRED: To what places do the signposts point at this junction?
 4. Junction 1 scaled km above the "EJ" of "BUTTLEJORRK". Enter from the EAST. OBSERVATION 4 REQUIRED: What is written on the two signposts pointing to the EAST at this junction?

5. Junction 4.5 km East-North-East of GISBORNE.
Enter from the EAST-SOUTH-EAST.

6. Junction 4.5 km South-South-West of BARINGO
PICNIC GROUND. Enter from the EAST-SOUTH-EAST.

DISTANCE: 78.6 km.

TIME ALLOWED: 75 minutes.

ADVICE: This stage is designed to get you "into the swing" of BP Rally navigation. Your points loss (if any) will be scored for interest only and will not count towards the actual Rally. However, you are due out on the first competitive Section 75 minutes after you have left the Start. If you are late, you may lose your place in the Starting Order.

SECTION 1MAP: 301

CONTROL: Mapped junction $1\frac{1}{2}$ scaled km North-North-West of KERRIE.

ENTRY: From the SOUTH-WEST.

VIA: CHEROKEE from the SOUTH.

DISTANCE: $10\frac{1}{4}$ km.

TIME ALLOWED: 10 minutes.

- ADVICES:
- a. This section is not as difficult as it looks. But it should get you into the right frame of mind for what is to follow.
 - b. There is a good unmapped road going through the "3" of "63" and the "O" of "MT.MACEDON".
 - c. The Directors used approx. 2 km of unmapped roads between the Via and The Control. These roads are to the East of the road shown on the map as going through the "g" of "Mt.Towrong". Don't use this mapped road.

SECTION 2MAP: 301

CONTROL: Mapped cross road of three white and one dotted roads $9\frac{1}{2}$ scaled km North-North-East of CHINTIN.

ENTRY: From the SOUTH-SOUTH-WEST along the mapped dotted road.

- VIA:
1. Junction 2 km South of ROCHFORD from the WEST.
 2. Junction 1.5 km North-West of SPRINGFIELD from the WEST along the dotted road.

DISTANCE: $28\frac{3}{4}$ km.

TIME ALLOWED: 24 minutes.

SECTION 3MAP: 301

CONTROL: Junction on the black road 3 km North-West of PYALONG.

ENTRY: From the SOUTH-WEST along the dotted road.

VIA: Junction on the black road 7.1 km South-South-East of PYALONG from the EAST-SOUTH-EAST.

OUT OF BOUNDS: The area covered by the red circle centred on PYALONG.

DISTANCE: 30 km.

TIME ALLOWED: 24 minutes.

SECTION 4.MAP: 301

CONTROL: Junction 3.3 km South-South-West of HILLDENE

ENTRY: From the SOUTH-SOUTH-EAST

VIA:

1. Depart Control 3 from across the Highway and then use 0.35 km of unmapped roads to join the mapped dotted road.
2. SUGARLOAF CK. from the SOUTH-SOUTH-WEST using approx. 3½ km. of unmapped roads.
3. Junction 6 km West of TALLAROOK from the SOUTH-SOUTH-WEST.

DISTANCE: 41 km.

TIME ALLOWED: 33 minutes

SECTION 5.

MAP: 301

CONTROL: BP MYORA Service Station in SEYMOUR.VIA: The following Route Chart from Control 4:

0.00 T.R. onto bitumen.
2.90 S.O.
3.25 K.L., then
3.30 STOP, then T.R.
3.45 90 km/h restriction
4.50 K.L. (Ford Rd.)
4.75 S.O. (Drive-In Theatre)
5.80 S.O. SP Melbourne.
6.25 S.O. SP Seymour
7.40 75 km/h restriction
7.55 S.O. SP Seymour
7.90 60 km/h restriction
8.20 B.L. into Roadhouse. Hand your Road Card
to the Scorers.

TIME ALLOWED: 10 minutes.

This is the end of DIVISION 1. Your TIME OUT FOR DIVISION 2 will be given to you by the Scorers. You will have approximately 45 minutes to refuel and have a bite. The OUT CONTROL is at the Northern exit from the Roadhouse.

YE OLDE

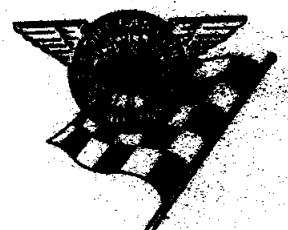
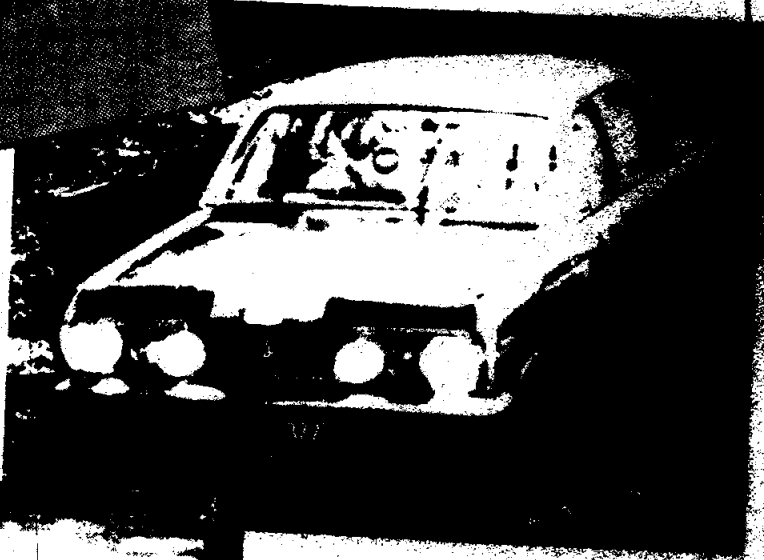
BP RALLY

No. 2

February 3-4-5,
1984



Route Instructions
Division 2



DIVISION 2.SEYMOUR to WANGARATTASECTION 6MAP: 301

CONTROL: Unmapped junction on the red mapped road
7 scaled km East of SEYMOUR.

ENTRY: From the NORTH-WEST along the mapped road.

VIA: The following Route Chart from BP Myora:

0.00	T.L. into Highway. 60 km/h limit applies.
0.50	T.R. SP Yea.
1.30	T.L. SP Yea.
1.35	T.R. SP Yea.
1.75	T.L. SP Highlands.
2.50	S.O. SP Highlands.
3.60	S.O. SP Highlands Rd.
4.50	75 km/h restriction sign.
5.25	Derestriction sign.
8.30	T.H.R. into CONTROL.

TIME ALLOWED: 10 minutes

SECTION 7MAP: 301

CONTROL: Unmapped junction on the red mapped road
9 scaled km East of SEYMOUR.

ENTRY: From the SOUTH along an unmapped Rd.

DISTANCE: 7½ km.

TIME ALLOWED: 6 minutes

ADVICE: You MUST NOT turn into any gateways on this section.

SECTION 8MAP: 301

CONTROL: Junction on the red road 4.5 km South-South-East of TERIP TERIP.

ENTRY: From the SOUTH-WEST

VIA:

1. Junction 6 km North of CAVEAT from the WEST.
OBSERVATION REQUIRED: What road name is shown on the signpost at this junction?
2. Junction 6.7 km South of TERIP TERIP from the WEST-NORTH-WEST.

DISTANCE: 43.7 km.

TIME ALLOWED: 35 minutes.

SECTION 9MAP: 301

CONTROL: Junction on the MAROONDAH HIGHWAY 1.5 km West-South-West of MERTON.

ENTRY: From the SOUTH-WEST along the dotted road.

VIA:

1. GOBUR from the SOUTH. OBSERVATION REQUIRED: Which Petrol Company has a Depot at Gobur? (The answer is on a house on your left approx. 0.2 km North of the main road junction at Gobur).
2. Junction of red roads 6.7 mapped km East-South-East of GOBUR from the WEST.

DISTANCE: 28 km.

TIME ALLOWED: 25 minutes.

ADVICES:

1. The first 7 km of the Section provide "magic" driving, but BEWARE!, there are many steep drops on the left!
2. The Directors used approx. 3 km of unmapped road between Vias 1 and 2. This "road" is steep and rough in places.

SECTION 10MAP: 301

CONTROL: Junction on the MAROONDAH HIGHWAY 2.2 km
South-East of MERTON.

ENTRY: From the NORTH-WEST in accordance with the
Route Chart.

VIA: The following Route Chart:
0.00 T.L. into HIGHWAY. CAUTION!
0.85 MERTON sign.
1.25 AMOCO Service Station on left.
1.30 S.O. SP Mansfield.
2.80 K.R. on Highway (Strathbogie)
3.80 T.L. into CONTROL

TIME ALLOWED: 5 minutes.

SECTION 11MAP: 321

CONTROL: TALLANGALOOK

ENTRY: From the SOUTH-WEST

DISTANCE: 18 3/4 km

TIME ALLOWED: 17 minutes.

SECTION 12MAP: 321CONTROL:

LIMA E.

ENTRY:

From the SOUTH along an unmapped road.

DISTANCE:

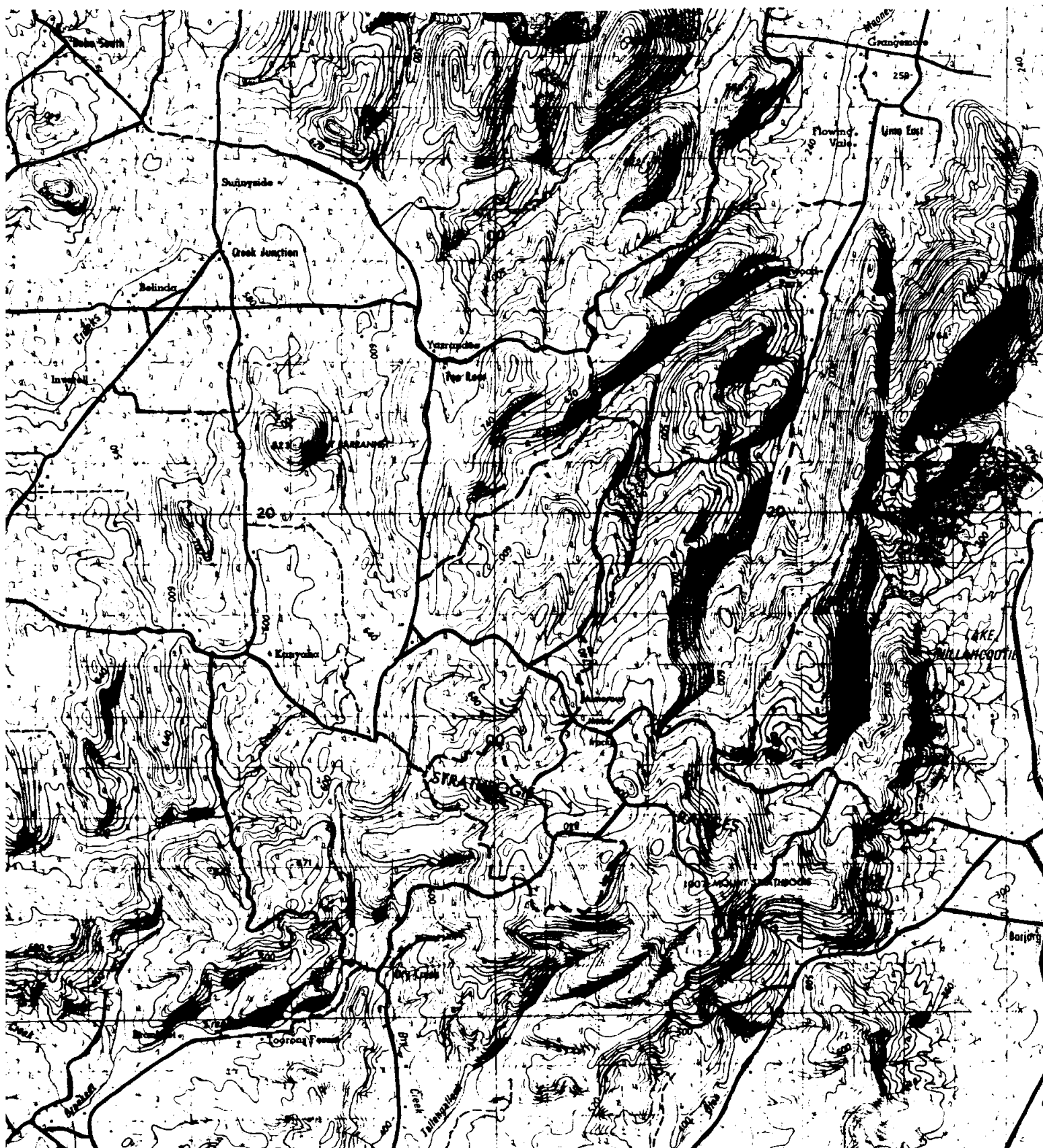
23½ km.

TIME ALLOWED:

20 minutes.

ADVICE:

This section is totally unmapped on the Official Map. To help you with your navigation, we print a partial (doctored) copy of the EUROPA 100,000:1 Army Map. Whilst its accuracy is NOT guaranteed, we suggest you use it!



SECTION 13MAP: 321

CONTROL: Junction 2 scaled km South-East of WRIGHTLEY.

ENTRY: From the WEST-SOUTH-WEST.

VIA: 1. SWANPOOL. Refuel at Swanpool Store.
2. Use yellow mapped roads only between SWANPOOL and the Control.

DISTANCE: ³¹~~36~~ 3/4 km.

TIME ALLOWED: 45 minutes. This includes 12 minutes (approx.) to refuel and service at Swanpool. Snack Bar Service is available at the Store.

SECTION 14MAP: 321

CONTROL: Junction 5½ scaled km South of BOGGY CK.

ENTRY: From the SOUTH-EAST.

DISTANCE: 56 km.

TIME ALLOWED: 48 minutes.

ADVICE: The Directors used red and yellow roads only in this section.

SECTION 15MAP: 321

CONTROL: DOCKER.

ENTRY: From the SOUTH-WEST

VIA: Mapped bend in the white road 4 scaled km East-South-East of HANSONVILLE from the EAST-SOUTH-EAST using approx. 6½ km. of unmapped roads.

DISTANCE: 31 km.

TIME ALLOWED: 24 minutes.

ADVICES: 1. DO NOT enter any gateways on this section.
2. The Directors used 3.3 km of unmapped road between the Via and the Control.

SECTION 16MAP: 321

CONTROL: Unmapped junction on the yellow mapped road
10 scaled km East-South-East of WANGARATTA.

ENTRY: From the SOUTH-WEST using approx. 4½ km. of
unmapped roads.

OUT OF BOUNDS: 1. The red road between DOCKER and WANGARATTA.
2. MILAWA.

DISTANCE: 16 km.

TIME ALLOWED: 13 minutes.

SECTION 17MAP: 321

CONTROL: Caltex Service Station in Rowan St. Wangaratta.

VIA: The following Route Chart from Control 16:

- 0.00 T.L. SP Wangaratta 11.
- 9.30 Wangaratta City Boundary.
- 9.60 60 km/h restriction. Start QUIET ZONE.
- 10.90 GIVE WAY, then T.L. into HUME HIGHWAY.
- 11.05 T.R. at traffic lights. SP Peechelba.
- 11.40 S.O. around Roundabout.
- 11.50 B.L. into Service Station.

TIME ALLOWED: 10 minutes.

This is the end of DIVISION 2. Your TIME OUT for DIVISION 3 will be given to you by the Scorers. You will have approximately 25 minutes to refuel and have a quick service. Food is not available in Wangaratta. The OUT CONTROL is at the Northern exit from the Roadhouse.

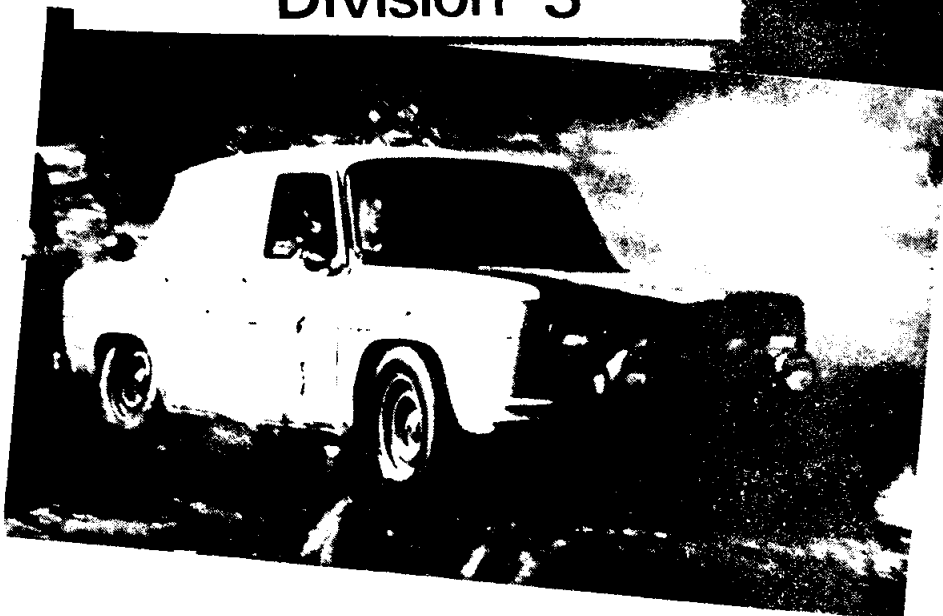
YE OLDE BP RALLY

No.2

February 3-4-5,
1984



Route Instructions
Division 3



DIVISION 3WANGARATTA to ROCHESTERSECTION 18MAP: 321

CONTROL: On the white mapped roads 8 scaled km South-South-West of KILLAWARRA. (i.e. where the road crosses the line drawn between KILLAWARRA and KILFEERA).

ENTRY: From the SOUTH-SOUTH-EAST as per Route Chart.

VIA: The following Route Chart:

0.00 T.L. SP Rowan St. 60 km/h applies.
0.85 T.R. around roundabout. SP Yarrawonga.
1.25 T.L. along main route.
1.50 B.R. SP Yarrawonga.
2.35 S.O., then 75 km/h restriction.
2.70 Derestriction sign.
3.50 S.O. off main highway. SP Wangandarry
4.35 S.O.
9.20 B.R., then K.R. SP 19 Thoona
10.45 B.L. on bitumen (Wilson Rd).
14.15 Bitumen ends.
14.30 CONTROL.

TIME ALLOWED: 13 minutes.

SECTION 19

MAP: 321

CONTROL:

YEERIP

ENTRY:

From the EAST (unmapped)

VIA:

1. Unmapped junction on the white mapped road, 1 scaled km South of the second "L" in "KILLAWARRA". Enter from the SOUTH along the unmapped road.

2. The following Route Chart from Via 1:

- 0.00 T.R. onto bitumen. SP Wangaratta.
- 0.20 S.O. off bitumen. SP Killawarra Forest.
- 0.40 T.L. over grid. SP Killawarra Forest.
- 0.65 B.R. SP Frosts Lane
- 1.60 S.O.
- 2.20 B.L. on main track.
- 3.00 OBSERVATION REQUIRED: What is written on the sign post at this junction?

Proceed to CONTROL.

DISTANCE:

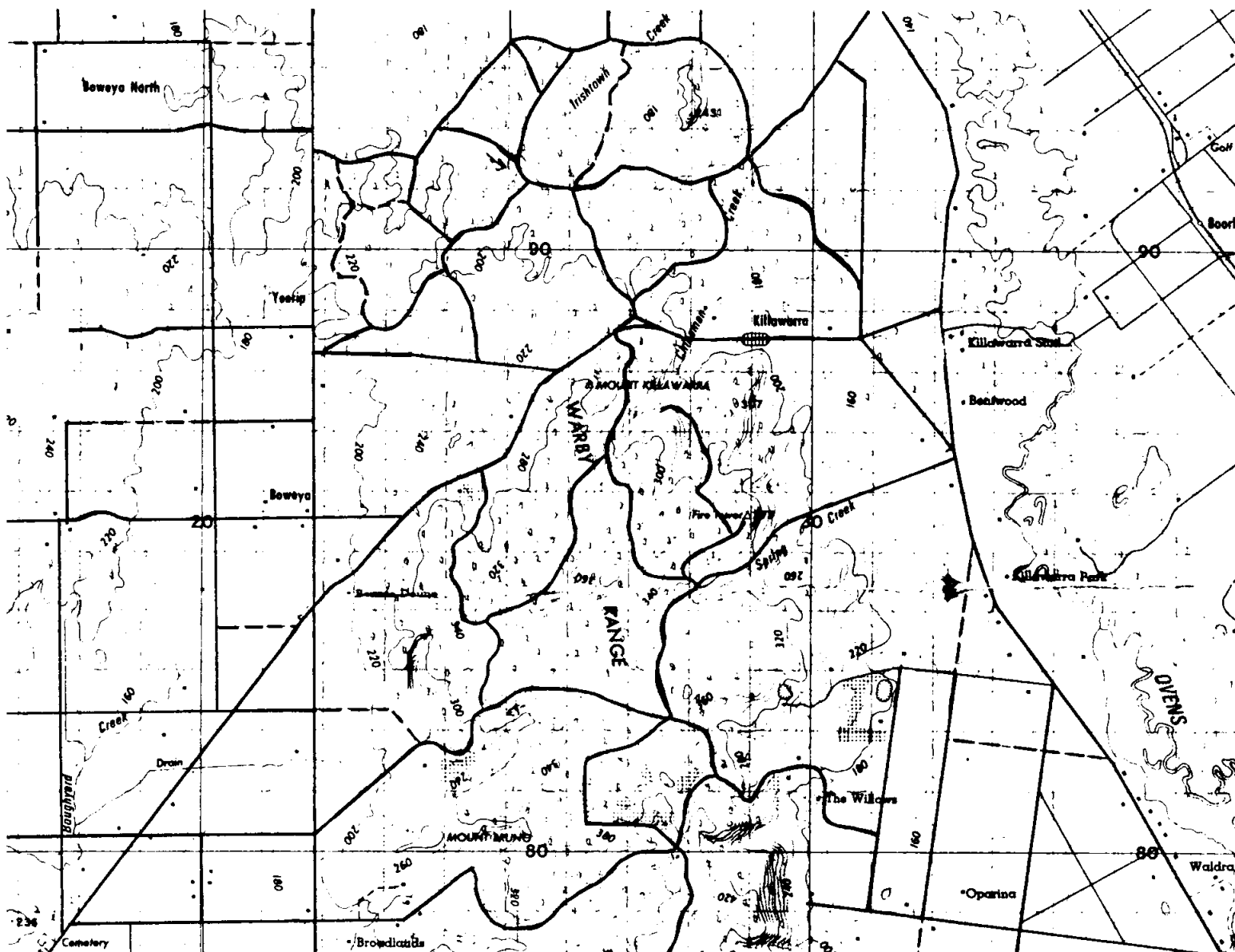
24.1 km.

TIME ALLOWED:

22 minutes.

ADVICE:

The entire section is virtually unmapped. To assist you we reprint a section of the Wangaratta 1:100,000 map covering this area. The accuracy of this map is NOT guaranteed.



SECTION 20MAP: 321

CONTROL: ALMONDS.

ENTRY: From the EAST (unmapped).

VIA: BOWEYA NTH. from the EAST (unmapped).

DISTANCE: 12 km.

TIME ALLOWED: 10 minutes.

ADVICES:

1. The entire section is, once again, unmapped. However, the Directors believe that it can be logically navigated from the Official Map.
2. Ignore any "ROAD CLOSED" signs on this section.

SECTION 21MAP: 321

CONTROL: Unmapped junction on the mapped white road
5½ scaled km North of TUNGAMAH.

ENTRY: From the NORTH along the mapped road.

PROCEED VIA: a maintained (i.e. constant) average speed of 65 km/h.

SECTION 22MAP: 321

CONTROL: YOUARANG

ENTRY: From the NORTH

VIA: Exit Control 21 to the WEST along an unmapped road.

DISTANCE: 13 3/4 km.

TIME ALLOWED: 11 minutes.

ADVICE: The Directors crossed BOOSEY CK. over a good
unmapped ford 5½ scaled km North-West of TUNGAMAH.

SECTION 23MAP: 321

CONTROL: Unmapped junction on the red mapped road 3½ scaled km North of NUMURKAH.

ENTRY: From the EAST along 1.65 km of unmapped road.

VIA:

1. YOUANMITE from the SOUTH.
2. Mapped junction on the red road 4 scaled km West-South-West of KATAMATITE. Enter from the SOUTH.
3. The following Route Chart from VIA 2:
 - 0.00 T.L.
 - 1.17 S.O. along bitumen
 - 1.83 S.O.
 - 2.18 S.O.
 - 2.28 Bridge over Broken Ck.
 - 2.38 T.R. onto unmapped road.
4. NARINGANINGALOOK (i.e. the circle above the "A") from the SOUTH.

DISTANCE: 51½ km.

TIME ALLOWED: 41 minutes.

ADVICES:

1. The Directors used approx. 10 km of unmapped roads between Control 22 and VIA 1.
2. There are many ways to go between VIA 4 and the junction 1.65 km East of CONTROL 23. All are permissible.

SECTION 24MAP: 321

CONTROL: Same as for Section 23.

ENTRY: From the EAST as per the Route Chart.

VIA: The Following Route Chart from Control 23:

0.00 T.L.

0.55 S.O. (Allens Rd).

1.55 CAUTION! Railway Crossing, then S.O.

1.90 60 km/h restriction.

2.15 Give Way, then T.L. SP Saxton St.

2.90 CAUTION! Railway Crossing.

3.10 T.L.

3.70 T.R. into BP Service Station for refuel.
After refuel T.R. into main road and
proceed:

4.40 Derestriction sign.

5.35 T.L. (Narring Rd).

7.00 CONTROL.

TIME ALLOWED: 20 minutes, includes about 10 minutes for refuel.

SECTION 25MAP: 321

CONTROL: McCOYS BRIDGE

ENTRY: From the NORTH (T.H.L. off Highway into CONTROL).

VIA:

1. Unmapped Junction on the white mapped road 14 scaled km West of NUMURKAH (i.e. at the mapped bend) from the NORTH using 1 3/4 km of unmapped roads.
2. KOTUPNA from the EAST.

DISTANCE: 38 3/4 km.

TIME ALLOWED: 30 minutes.

If you are running very late at this stage, the Directors recommend that you don't attempt Sections 26 to 29, but go directly to Rochester via KYABRAM.

SECTION 26MAP: 321

CONTROL: St GERMAINS

ENTRY: From the NORTH (unmapped).

DISTANCE: 12.7 km.

TIME ALLOWED: 12 minutes.

ADVICES:

1. The entire Section is unmapped, but hopefully not very difficult. Follow the compass and speedo distances.
2. The Directors believe that the dotted road, mapped as entering UNDERA N. from the West, does not exist from 2 km West of UNDERA N. to the black road.
3. If really lost, head for the red mapped road and take a "WD". The Directors did not use the red road.

SECTION 27MAP: 321

CONTROL: Junction of white and dotted roads 4 scaled km West-South-West of KOYUGA.

ENTRY: From the EAST-NORTH-EAST.

VIA:

1. TARIPTA from the EAST, exit to the NORTH along an unmapped road.
2. TONGALA E. from the EAST, exit to the NORTH.
3. Unmapped junction 3.2 scaled km North of TONGALA. Enter from the EAST and exit to the WEST along unmapped roads.

DISTANCE: 40 km.

TIME ALLOWED: 32 minutes.

SECTION 28MAP: 320

CONTROL: Junction 6.5 km North-North-East of ROCHESTER.

ENTRY: From the EAST-NORTH-EAST along the dotted road.

DISTANCE: 14 km.

TIME ALLOWED: 11 minutes.

SECTION 29

MAP: 320

CONTROL: BP Parkway Service Station in ROCHESTER (i.e. where the white road enters from the South-West).

ENTRY: From the EAST in accordance with the Route Chart:

PROCEED VIA: The following Route Chart from Control 28:

0.00 T.L.
 1.70 S.O.
 3.60 B.R.
 4.40 S.O.
 6.65 60 km/h restriction. Start QUIET ZONE.
 6.90 Give way, then T.R.
 7.45 Note Church St. on left just before the bridge. The breakfast is provided in the Sports Pavilion in the Recreation Reserve at the end of Church St.
 7.60 S.O.
 7.65 B.L.
 7.80 T.R. SP Gillis St.
 7.90 STOP, then S.O. SP Echuca.
 8.00 CAUTION! Railway Crossing.
 8.05 B.L., then T.R. into Service Station and CONTROL.

TIME ALLOWED: 8 minutes.

This is the end of DIVISION 3. Your TIME OUT for DIVISION 4 will be given to you by the Scorers in the Service Station. The OUT CONTROL is at the exit from the VICRAIL Parking Area opposite the Service Station.

A hoist and other tools for repair is available at the Service Station.

A catered breakfast is available at the Football Club's Sports Pavilion (Refer note in Route Chart into Rochester). The length of the break in Rochester will be adjusted to assure that you have adequate time for the breakfast - you will have at least one hour, possibly more. Your Service Crew is also welcome at the breakfast. Note that you will have to pay for your food.

YE OLDE

BP RALLY

No. 2

February 3-4-5,
1984



Route Instructions
Division 4



DIVISION 4ROCHESTER to SWAN HILLSECTION 30MAP: 320

CONTROL: Unmapped railway crossing 0.5 scaled km South of McCOLL Railway Station.

ENTRY: From the EAST (unmapped).

VIA:

1. Exit the BP Service Station in ROCHESTER to the SOUTH-WEST.
2. DIGGORA S. from the NORTH (unmapped).
3. PANNOOMILLOO from the EAST.

DISTANCE: 30½ km.

TIME ALLOWED: 24 minutes.

SECTION 31MAP: 320

CONTROL: Junction 5.5 km North of TERRICK STH.

ENTRY: From the EAST-SOUTH-EAST using approx. 5 km of unmapped roads.

VIA:

1. MILLOO from the EAST (unmapped).
2. Unmapped junction 0.8 km East of WANURP. Enter from the SOUTH (unmapped) and exit to the WEST.

DISTANCE: 39 km.

TIME ALLOWED: 30 minutes.

SECTION 32MAP: 320CONTROL: SYLVERTERREENTRY: From the WEST (unmapped).VIA: The following Route Chart from Control 31:

0.00 S.O.
2.30 Stay on main road into forest area.
4.79 T.R. SP Sylvaterre.
4.84 T.L. thru Gate then S.O. SP Brown Tk.
5.25 S.O.
5.90 T.R. (Brown Tk).
6.18 S.O.
6.95 K.L.
7.08 S.O. OBSERVATION REQUIRED: What is the
track name shown on the post at this
junction?
7.45 S.O.
7.55 S.O.
7.72 Gate
Proceed to CONTROL.

DISTANCE: 13 3/4 km.TIME ALLOWED: 12 minutes.

ADVICES:

1. Aim for a gate out of the forest 2½ km West of the CONTROL.
2. EXTREME CARE is required in the forest, particularly if you have made a wrong turn and are returning (probably thru dust). At all times keep a lookout for other cars. Avoid collisions at all costs! Don't go thru any gates not marked with "Rally Entry" signs.

SECTION 33MAP 320

CONTROL: SYLVERTERRE

ENTRY: From the EAST.

VIA: The following Route Chart from CONTROL 32:
 0.00 T.R.
 3.40 T.L. thru gate, then B.L. and S.O. into REGAL TK.
 3.75 S.O. OBSERVATION REQUIRED: What are the track names shown on the post~~s~~ at this junction?
 Proceed to CONTROL.

DISTANCE: 9 3/4 km.

TIME ALLOWED: 8 minutes.

ADVICES:

1. Aim for a gate out of the forest 2 scaled km West of the junction 8.8 km North of TERRICK STH.
2. Although this section is easier than the last one, the same EXTREME CARE is required in the forest!

SECTION 34MAP: 320

CONTROL: Junction 2 scaled km South-West of GUNBOWER.

ENTRY: From the SOUTH.

VIA: Junction $1\frac{1}{2}$ scaled km East of BALD ROCK from the SOUTH.

DISTANCE: 30 $\frac{1}{2}$ km.

TIME ALLOWED: 25 minutes.

ADVICES:

1. The Directors used 4 $\frac{1}{2}$ km of unmapped road on the way to the VIA.
2. The Directors passed thru a totally unmapped junction located approximately at the "RR" of "MURRAY VALLEY HIGHWAY" between the VIA and the CONTROL.

SECTION 35MAP: 320

CONTROL: Unmapped junction on the dotted road 5 scaled km East of GUNBOWER.

ENTRY: From the WEST (unmapped).

VIA: The following Route Chart from CONTROL 34:

0.00 T.R.
 0.80 T.L. on main road.
 2.20 CAUTION! Bad bridge
 2.35 Old railway crossing.
 2.70 B.L. into Highway, then T.R. into Shell Service Station for refuel and a light snack. Park your car along picnic area just North-East of the Service Station.

After Service, etc., zero your speedo and proceed:

0.00 T.L. into Highway towards ECHUCA.
 0.55 T.L. SP Fox Island Rd.
 1.15 S.O. (Richards Rd).
 1.22 S.O. over bridge.
 1.27 T.R.
 1.40 Gravel Road sign.
 3.20 Bridge.
 6.40 CONTROL.

TIME ALLOWED: 25 minutes.

SECTION 36MAP: 320

CONTROL: Junction 11 scaled km West-North-West of LEITCHVILLE.

ENTRY: From the SOUTH along the vestigial white road.

VIA: LEITCHVILLE from the EAST, exit to the SOUTH.

DISTANCE: 34 km.

TIME ALLOWED: 27 minutes.

SECTION 37MAP: 320

CONTROL: MEAD

ENTRY: From the EAST-SOUTH-EAST using approx. 3 km of unmapped roads.

VIA: McMILLANS from the SOUTH-SOUTH-WEST.

DISTANCE: 13 km.

TIME ALLOWED: 10 minutes.

SECTION 38MAP: 320

CONTROL: Unmapped junction on the red road 2 3/4 scaled km East-North-East of BARR.

ENTRY: From the SOUTH-EAST along the unmapped road.

VIA: KOROOP. Enter from the SOUTH-SOUTH-EAST along an unmapped road. Exit to the NORTH-NORTH-WEST along another unmapped road.

DISTANCE: 19 km.

TIME ALLOWED: 16 minutes.

SECTION 39MAP: 320

CONTROL: At the end of the mapped white road 6 scaled km South of MURRABIT W.

ENTRY: From the EAST.

VIA:

1. Junction 7.2 km South-South-West of MYALL from the EAST.
2. Junction 1.5 km North of CAPEL CROSSING from the EAST.

DISTANCE: 25½ km.

TIME ALLOWED: 20 minutes.

ADVICE: The Directors used 9½ km of unmapped roads between CONTROL 38 and VIA 1, but the Course Checker used only 7 3/4 km of unmapped roads. Obviously, there are many ways to go.- all of them permissible.

SECTION 40MAP: 320

CONTROL: MURRABIT W.

ENTRY: From the SOUTH (unmapped).

DISTANCE: 7½ km.

TIME ALLOWED: 7 minutes.

ADVICE: The entire Section is unmapped, but fun. Once again, use extreme care over the first 5 or so kilometres which are in a forest having many tracks. You are too close to the Overnight Stop to risk having a collision! Also, exercise GREAT CAUTION between 1.95 and 2.10 km from the start of the Section. You may encounter traffic to and from a TIP.

SECTION 41MAP: 320

CONTROL: Junction 3 scaled km South-West of BENJEROOP.

ENTRY: From the EAST.

DISTANCE: 11 3/4 km.

TIME ALLOWED: 9 minutes.

SECTION 42MAP: 320

CONTROL: Junction 7.5 km West-South-West of FISH POINT.

ENTRY: From the EAST-NORTH-EAST.

VIA:

1. Unmapped junction 1½ scaled km West of WINLATON from the SOUTH (unmapped).
2. Unmapped junction 5 scaled km West-South-West of FISH POINT from the EAST (unmapped).

DISTANCE: 20 km.

TIME ALLOWED: 16 minutes.

SECTION 43MAP: 320

CONTROL: BP City Centre Service Station in Swan Hill.

VIA: The following Route Chart from Control 42:

0.00 GIVE WAY and T.R. into Highway.
2.40 60 km/h restriction in LAKE BOGA.
3.65 Derestriction sign.
16.50 75 km/h restriction.
17.50 60 km/h restriction.
18.80 T.L. at Clock Tower. SP Hospital.
18.90 T.L. into Service Station.

TIME ALLOWED: 15 minutes.

This is the end of DIVISION 4 and for trialling today. The Directors hope that you have found it challenging and enjoyable. After refuelling we suggest that you have a rest and then enjoy the Social, which will be held at the Rio Vista Receptions, right next to the Service Station.

There are no impounding, work on cars, etc., restrictions during the overnight stop.

The first car is due out for Sunday's Division at 8 a.m., the Start being in the parking area opposite the Service Station. The Starting Order will be in accordance with points lost at Swan Hill and will be announced at about 10 p.m. at the Social.

YE OLDE BP RALLY

No.2



February 3-4-5,
1984

Route Instructions
Division 5



DIVISION 5
SWAN HILL to MYRNIONG

SECTION 44MAP: 320

CONTROL: Junction of red and dotted white roads 11 km
West-South-West of SWAN HILL.

ENTRY: From the NORTH-EAST.

VIA: The following Route Chart from the Start Control:

0.00	T.R. into McCallum St. 60 km/h restriction applies.
1.55	S.O. SP.Ultima 3l.
1.75	75 km/h restriction sign.
2.10	Derestriction sign.
10.20	B.L. into CONTROL.

TIME ALLOWED: 8 minutes.

SECTION 45MAP: 320

CONTROL: GOSCHEN

ENTRY: From the WEST.

DISTANCE: 12 km.

TIME ALLOWED: 9 minutes.

SECTION 46MAP: 320

CONTROL: Junction 2.5 scaled km North of TRESKO W.

ENTRY: From the WEST (unmapped).

DISTANCE: 19.5 km.

TIME ALLOWED: 15 minutes.

ADVICE: The Directors exited the mapped junction 5.5 km
East of Control 45 towards the East-South-East
along the mapped yellow road.

SECTION 47MAP: 320

CONTROL: KORRAK KORRAK

ENTRY: From the NORTH

DISTANCE: 26½ km.

TIME ALLOWED: 20 minutes.

SECTION 48MAP: 320

CONTROL: Junction 2 scaled km West of CANARY.

ENTRY: From the NORTH-NORTH-EAST (unmapped).

VIA:

1. Junction of dotted roads immediately East of the "E" of "NORMANVILLE" from the WEST.
2. Unmapped junction on the red road 2 scaled km North-East of DINGWALL. Enter from the NORTH-NORTH-EAST along an unmapped road. Exit to the SOUTH-WEST.

OUT OF BOUNDS: DINGWALL.

DISTANCE: 54 km.

TIME ALLOWED: 41 minutes.

SECTION 49MAP: 320

CONTROL: Junction 4 scaled km North of YANDO.

ENTRY: From the EAST-SOUTH-EAST.

DISTANCE: 6.4 km.

TIME ALLOWED: 5 minutes.

SECTION 50MAP: 320CONTROL: WYCHITELLA NORTH.ENTRY: From the NORTH.VIA: The following Route Chart from Control 49:

0.00	T.L.
1.70	T.R.
2.85	CAUTION! Bridge.
4.00	T.R.
5.05	T.L., then CAUTION!! Large hump.
6.05	Bump, then T.R.
6.35	CAUTION!! Ridge.
7.80	GIVE WAY, then S.O. across bitumen.
9.95	T.L.
10.00	T.R.
13.80	CAUTION! B.R. onto bitumen.
15.80	T.L. SP Barraport West.
16.00	CAUTION! Railway Crossing, then T.H.L.
19.40	S.O.
21.10	S.O.
22.70	S.O.
24.40	STOP! Then T.R.
25.35	T.L. off bitumen.
26.40	<u>OBSERVATION REQUIRED</u> : What is written on the sign nailed to the tree on your left?
26.90	T-junction. Proceed to CONTROL.

DISTANCE: 42½ km.TIME ALLOWED: 36 minutes.SECTION 51MAP: 320CONTROL: Unmapped junction on the white mapped road 6 scaled km North-North-East of the road junction 2.7 km North-North-West of WEDDERBURN.ENTRY: From the NORTH-WEST (unmapped).VIA: Unmapped railway crossing 4 scaled km South-West of the junction 4.5 km West-North-West of BORUNG.
Enter from the NORTH.DISTANCE: 20½ km.TIME ALLOWED: 17 minutes

SECTION 52MAP: 320CONTROL: Junction 3.3 km West of WEDDERBURN.ENTRY: From the EAST-NORTH-EAST.VIA: The following Route Chart from Control 49:

0.00	T.R.
5.00	K.L. on main road.
6.20	GIVE WAY, then T.L. (Boort 40)
6.80	WEDDERBURN sign.
7.05	75 km/h restriction.
7.60	60 km/h restriction.
7.80	T.L. into CALTEX Roadhouse for Service and refreshments. Hand your first Road Card to the Scorers. After Service:
7.85	T.L. into Highway.
8.05	T.R. SP Nine Mile 14
8.50	K.R. on bitumen.
8.65	Derestriction sign.
8.85	S.O.
9.75	K.R. on bitumen.
10.90	B.L. into CONTROL.

TIME ALLOWED: 30 minutes, including allowance for service and refreshments.SECTION 53MAP: 320CONTROL: BERRIMAL. (i.e. the junction 2 km East of the junction immediately South of the "L" in "BERRIMAL").ENTRY: From the NORTH-NORTH-WEST.DISTANCE: 16 3/4 km.TIME ALLOWED: 14 minutes.SECTION 54MAP: 320CONTROL: GOWAR E.ENTRY: From the NORTH-WEST.DISTANCE: 15 km.TIME ALLOWED: 12 minutes

SECTION 55MAP: 320

CONTROL: Junction $\frac{1}{2}$ scaled km South of the "NT" in "FENTONS CK".

ENTRY: From the WEST.

DISTANCE: 15 $\frac{1}{2}$ km.

TIME ALLOWED: 13 minutes.

SECTION 56MAP: 320

CONTROL: Junction $\frac{1}{2}$ scaled km North of WEHLA.

ENTRY: From the NORTH-NORTH-WEST.

DISTANCE: 7.6 km.

TIME ALLOWED: 6 minutes.

SECTION 57MAP: 320

CONTROL: Unmapped junction $\frac{3}{4}$ scaled km North-West of RHEOLA.

ENTRY: From the WEST (unmapped)

DISTANCE: 12.6 km.

TIME ALLOWED: 12 minutes.

ADVICE: Most of the unmapped road into Control is rough.

SECTION 58MAP: 320

CONTROL: Junction $5\frac{1}{4}$ scaled km East of MOLIAGUL.

ENTRY: From the NORTH.

VIA: Totally unmapped junction located at the "c" of "McINTYRE". Enter from the NORTH-EAST and exit to the SOUTH-EAST along unmapped roads.

DISTANCE: 16 $\frac{1}{4}$ km.

TIME ALLOWED: 13 minutes.

A REQUEST: Please drive with consideration through RHEOLA.

SECTION 59MAP: 320

CONTROL: Unmapped junction on the TARNAGULLA-LAANECOORIE road 8 scaled km East-South-East of WAANYARRA.

ENTRY: From the NORTH-WEST along the red road.

VIA: The following Route Chart from Control 58:

0.00	B.L. into bitumen road.
6.60	S.O. (Keoghs Lane).
7.40	B.R. along bitumen.
7.70	Railway Crossing.
9.05	60 km/h restriction in TARNAGULLA.
9.35	T.R. SP Dunolly.
9.45	GIVE WAY and B.R. onto main road.
9.80	Milk Bar on left, then T.L. SP Poverty St.
10.00	T.R. into Caravan Park for refuel.
	After refuel return to main road (i.e. 9.80 route chart reading) for a quick refreshment in the Milk Bar, then zero odometer and proceed.
0.00	Head in a southerly direction towards DUNOLLY.
0.40	Derestriction sign.
2.20	B.L. SP 10 Laanecoorie.
3.40	K.L. on bitumen SP Laanecoorie.
7.05	T.R. into CONTROL.

TIME ALLOWED: 32 minutes.

SECTION 60MAP: 320

CONTROL: Bend in the mapped white road 3 scaled km South-East of EDDINGTON.

ENTRY: From the WEST-NORTH-WEST.

VIA: Junction of red roads immediately West of EDDINGTON from the WEST.

DISTANCE: 16 3/4 km.

TIME ALLOWED: 13 minutes.

SECTION 61MAPS: 320 and 301

CONTROL: Mapped junction 4 scaled km East of MOOLORT (301)

ENTRY: From the NORTH along the dotted road (301)

VIA: Mapped junction 11 scaled km East-North-East of HAVELOCK from the WEST-NORTH-WEST (320).

DISTANCE: 28½ km.

TIME ALLOWED: 22 minutes.

SECTION 62MAP: 301

CONTROL: Junction 3 scaled km South of NEWSTEAD.

ENTRY: From the WEST-NORTH-WEST.

VIA:

1. STRATHLEA. OBSERVATION REQUIRED: What is the number of the Strathlea School located 1 km South-East of Strathlea?
2. An unmapped junction on the dotted road 3 scaled km West-North-West of Control ~~60~~ 62. Enter from the SOUTH using 3.1 km of unmapped roads. CAUTION! the first 1.7 km of unmapped road is quite rough (Sorry, this is the best we could do!).

DISTANCE: 20½ km.

TIME ALLOWED: 19 minutes.

SECTION 63MAP: 301

CONTROL: Unmapped junction on the mapped white road 1 3/4 scaled km North-West of the junction 1.5 km North-East of BLAMPIED.

ENTRY: From the SOUTH-EAST (unmapped).

VIA:

1. T.R. from Control 60.
2. Unmapped junction on the white road 3 scaled km West-North-West of YANDOIT. Enter from the NORTH-NORTH-EAST using approx. 6 3/4 km of unmapped road.

DISTANCE: 30½ km.

TIME ALLOWED: 25 minutes.

SECTION 64

MAP: 301

CONTROL: Junction 2 scaled km West-North-West of
BOLWARRAH

ENTRY: From the NORTH-NORTH-WEST.

- VIA:
1. Rocklyn
 2. A totally unmapped junction located at the "Hi" of "Tipperary Hill". Enter from the North-West along Pinchgut Rd. Exit to the South-WEST along Slater Rd.
 3. Unmapped junction at the right-angle bend on the white mapped road 2.2 scaled km East of MOLLONGHIP. Enter from the North-West along an unmapped road. Exit to the EAST.

OUT OF BOUNDS: All roads within 1 km of BARKSTEAD.

DISTANCE: 28½ km.

TIME ALLOWED: 25 minutes.

ADVICE: The Directors used approx. 4½ km of unmapped roads between VIA 3 and the CONTROL and entered the junction 2 scaled km North of CONTROL 64 from the East along an unmapped track.

SECTION 65

MAP: 301

CONTROL

MYRNIONG HALL

VIA:

The following Route Chart from Control 62:

0.00	T.R.
1.15	STOP, then T.L.
3.90	STOP, then S.O.
5.25	S.O.
5.45	B.L. SP Melbourne.
6.10	Join Freeway with Caution.
30.80	B.L. off Freeway, SP Myrniong
31.15	S.O.
31.20	T.R. SP Myrniong,
31.25	STOP, then S.O. SP Myrniong.
31.40	S.O. (Melbourne).
33.00	Myrniong sign.
33.20	75 km/h restriction.
33.80	B.L.
33.90	Hall on right. Park where you can. Hand your Road Card to the Scorers.

TIME ALLOWED: 26 minutes.

This is the end of the Rally. The Directing team thanks you very much for participating and hope that you have found the event challenging but enjoyable.

You are invited to join the organisers for a Spit Roast and refreshments in the Hall afterwards. The Myrniong Hall (opposite) is open for bistro style dinner.

We suggest that you continue the post-mortems at next Wednesday's Club night, starting at 8.30 p.m.