

HRA 2008 BP ULTIMATE RALLY of South Eastern Australia

Supplied Maps

Division Three

(Swan Hill to Hopetoun)

This package consist of 11 pages including this page containing the following labelled maps:

250 E

250 F

County 100 I

250 G

250 H

100 J

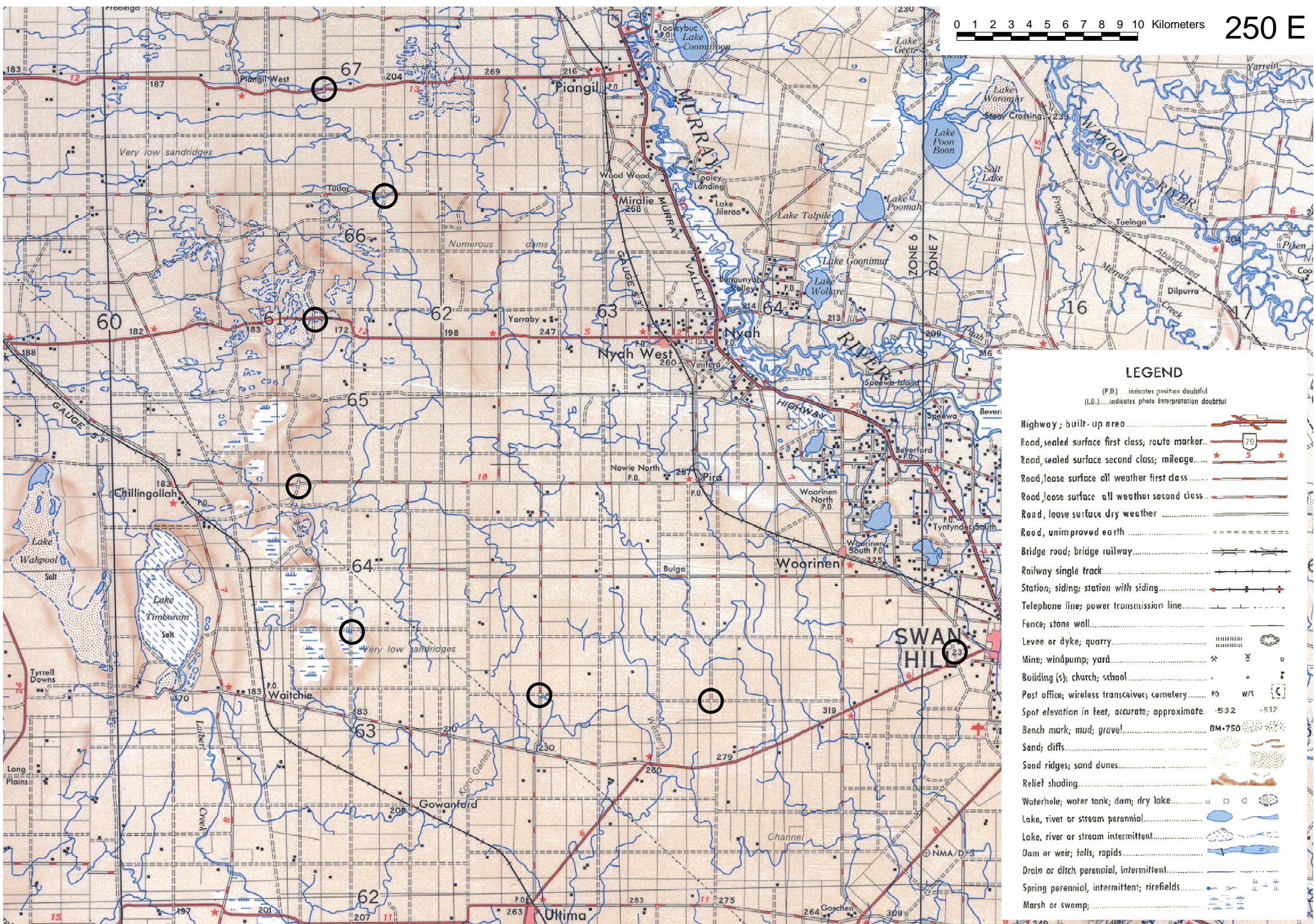
100 K

County 100 L

250 I

100 M

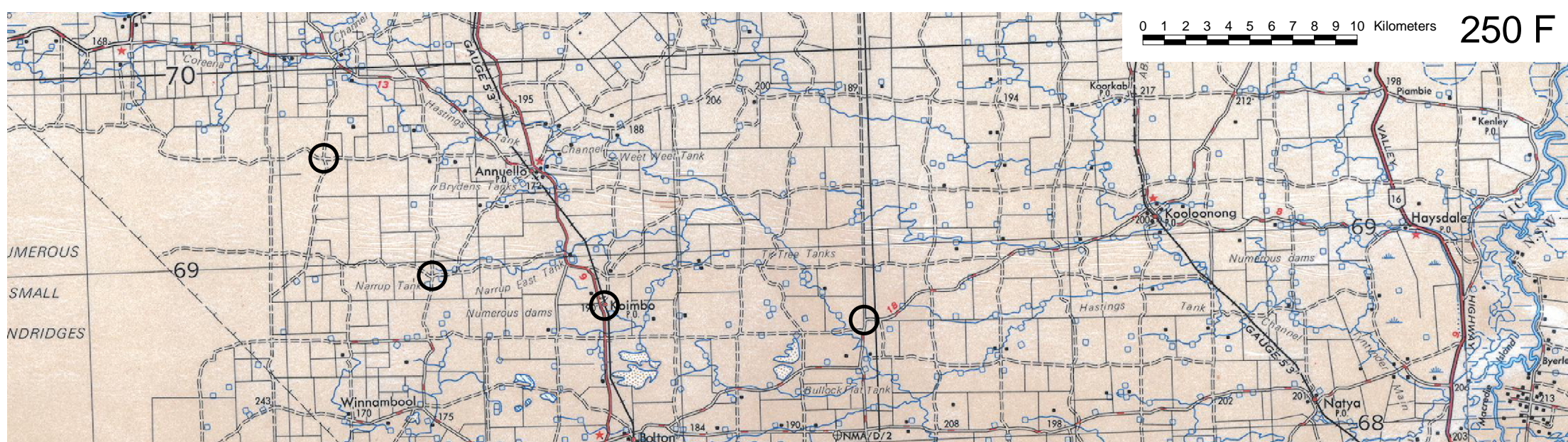
Please check that you have a complete set.



LEGEND

(P.D.) indicates position doubtful
(I.D.) indicates photo interpretation doubtful

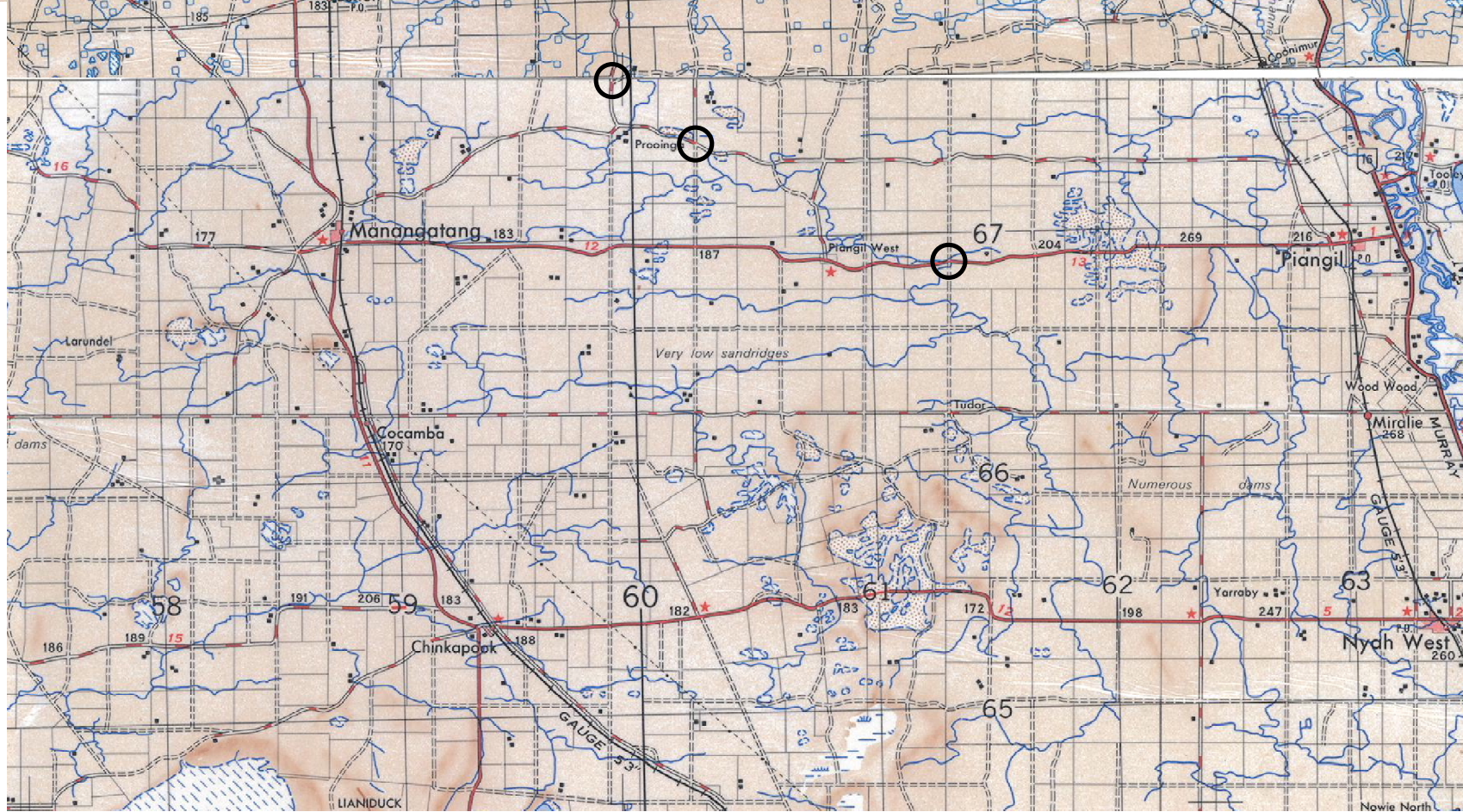
- Highway; built-up area
- Road, sealed surface first class; route marker
- Road, sealed surface second class; mileage
- Road, loose surface all weather first class
- Road, loose surface all weather second class
- Road, loose surface dry weather
- Road, unimproved earth
- Bridge road; bridge railway
- Railway single track
- Station; siding; station with siding
- Telephone line; power transmission line
- Fence; stone wall
- Levee or dyke; quarry
- Mine; windpump; yard
- Building (s); church; school
- Post office; wireless transceiver; cemetery
- Spot elevation in feet, accurate; approximate
- Bench mark; mud; gravel
- Sand; cliffs
- Sand ridges; sand dunes
- Relief shading
- Waterhole; water tank; dam; dry lake
- Lake, river or stream perennial
- Lake, river or stream intermittent
- Dam or weir; falls, rapids
- Drain or ditch perennial, intermittent
- Spring perennial, intermittent; firefields
- Marsh or swamp



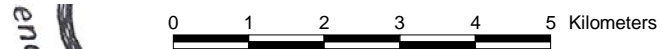
LEGEND

(P.D.)... indicates position doubtful
(I.D.)... indicates photo interpretation doubtful

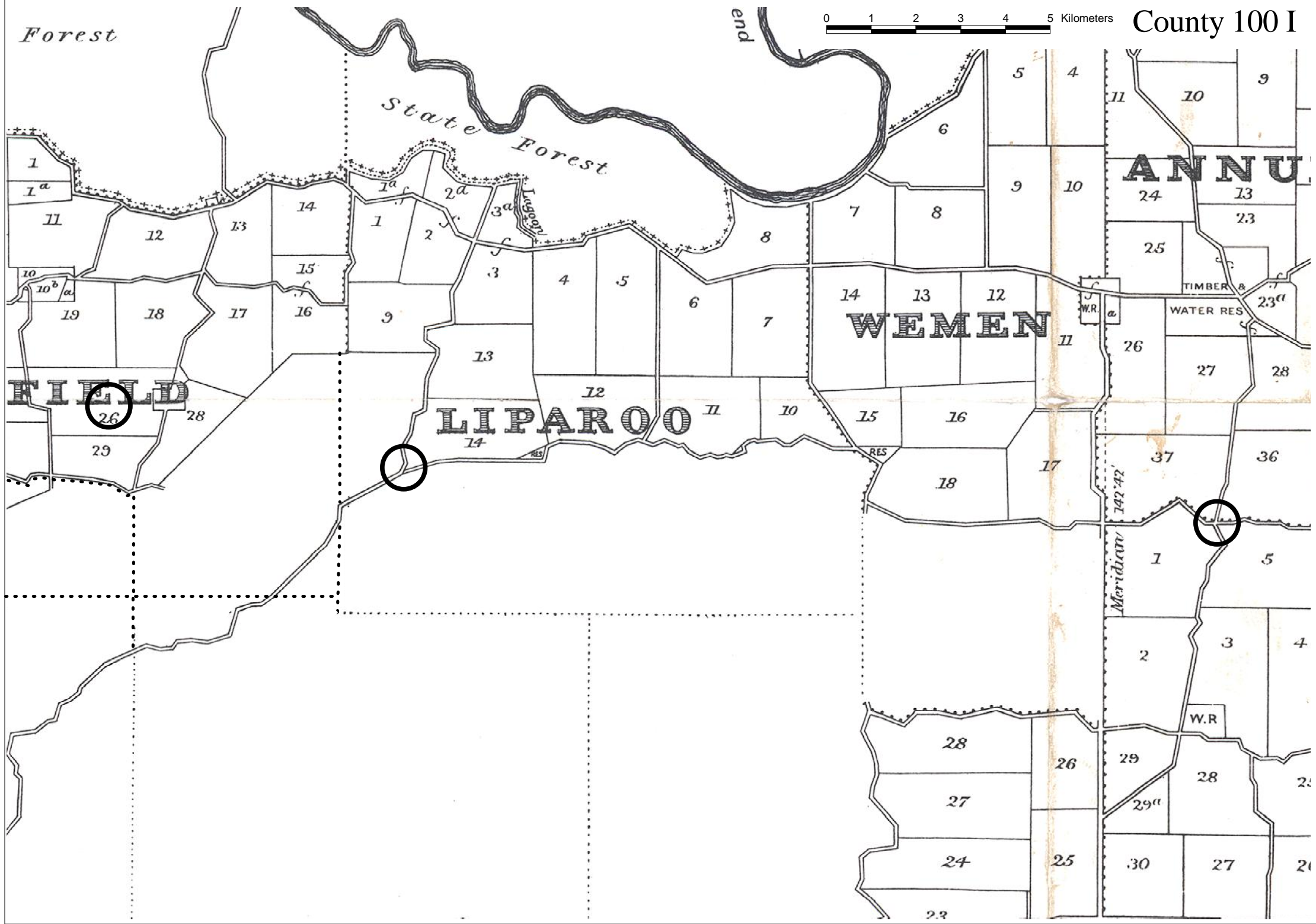
- Highway; built-up area
- Road, sealed surface first class; route marker
- Road, sealed surface second class; mileage
- Road, loose surface all weather first class
- Road, loose surface all weather second class
- Road, loose surface dry weather
- Road, unimproved earth
- Bridge road; bridge railway
- Railway single track
- Station; siding; station with siding
- Telephone line; power transmission line
- Fence; stone wall
- Levee or dyke; quarry
- Mine; windpump; yard
- Building (s); church; school
- Post office; wireless transceiver; cemetery
- Spot elevation in feet; accurate; approximate
- Bench mark; mud; gravel
- Sand; cliffs
- Sand ridges; sand dunes
- Relief shading
- Waterhole; water tank; dam; dry lake
- Lake, river or stream perennial
- Lake, river or stream intermittent
- Dam or weir; falls; rapids
- Drain or ditch perennial, intermittent
- Spring perennial, intermittent; ricefields
- Marsh or swamp



Forest



County 100 I



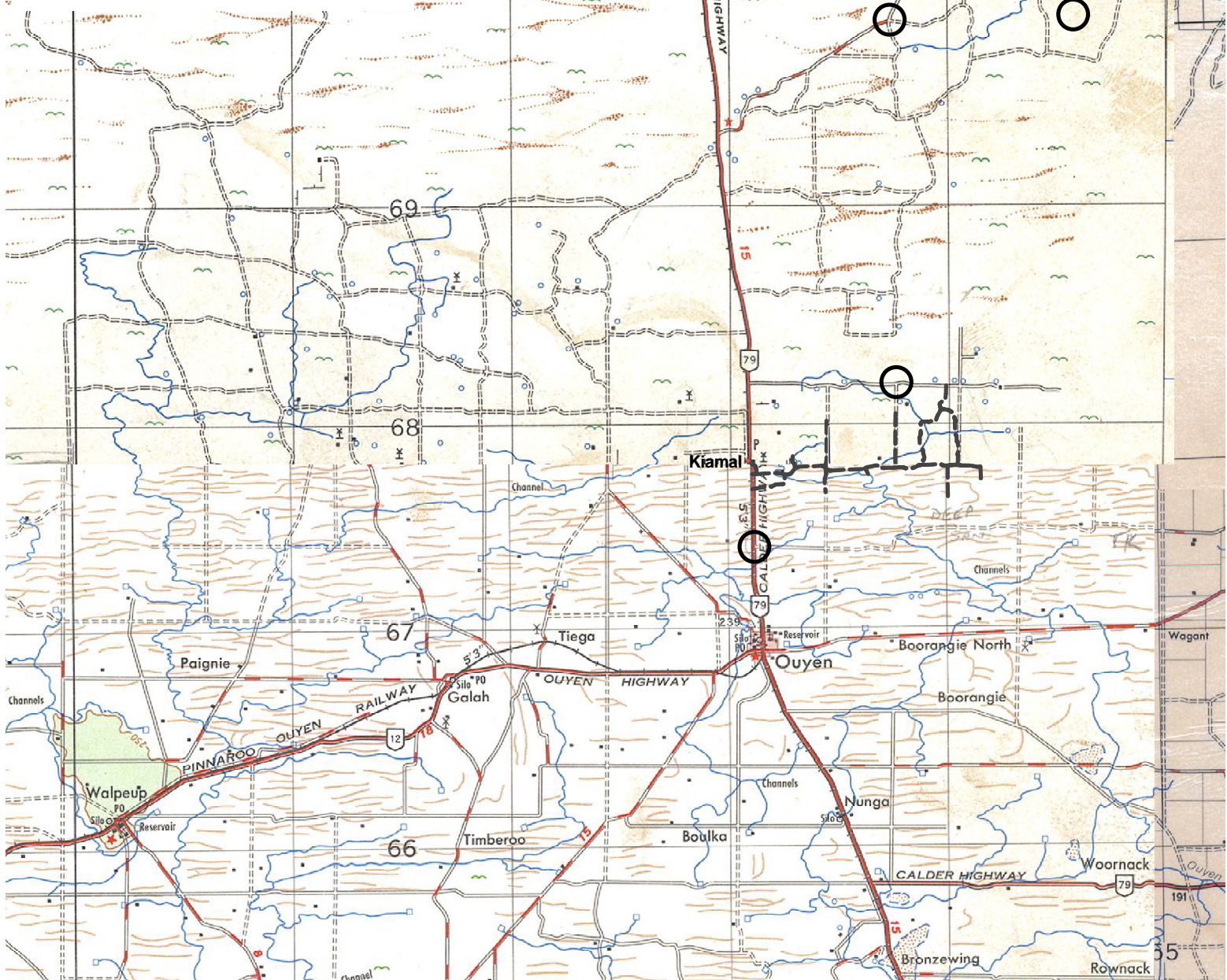
LEGEND

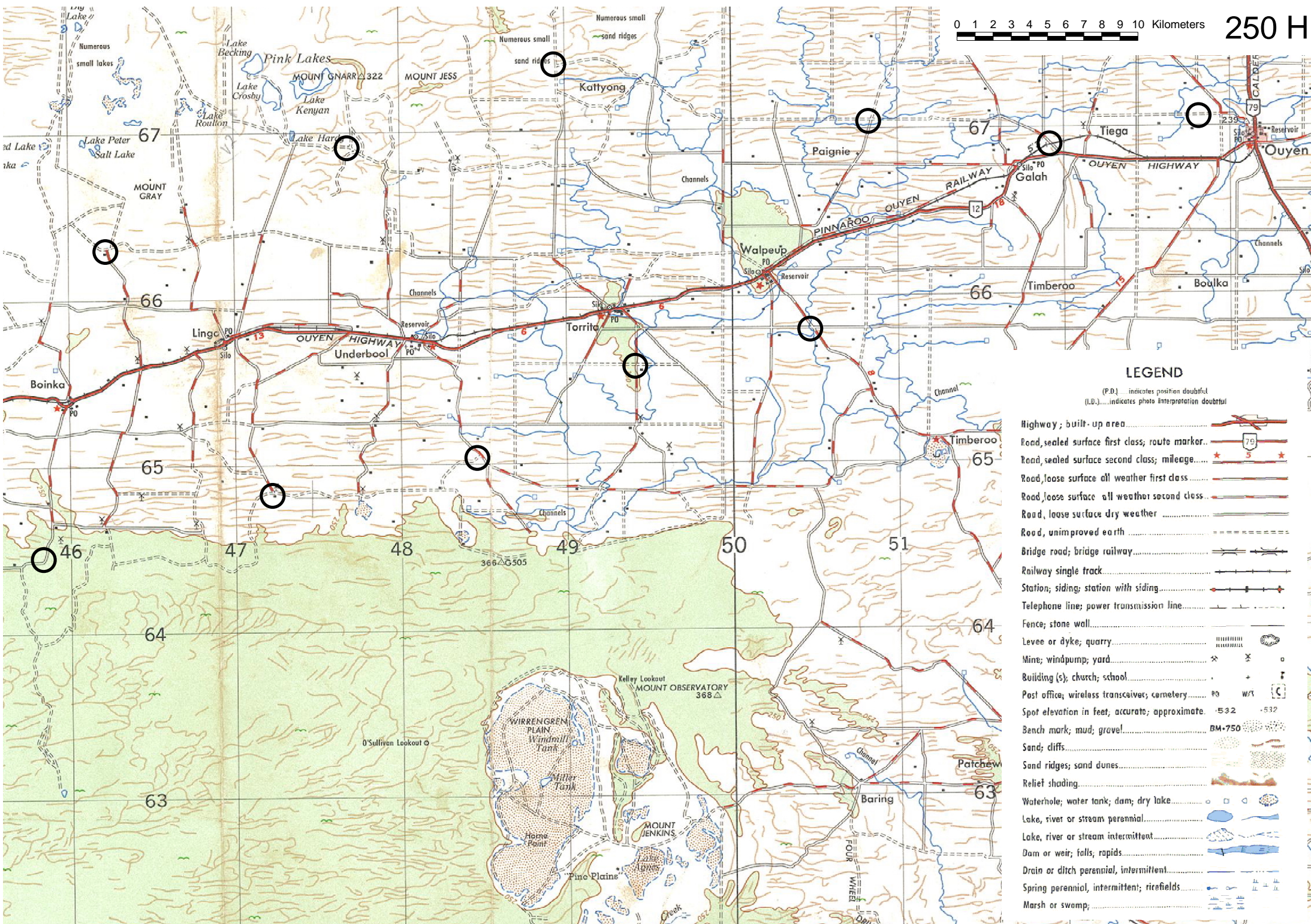
(P.D.) indicates position doubtful
(L.D.) indicates photo interpretation doubtful

- Highway, built-up area
- Road, sealed surface first class; route marker
- Road, sealed surface second class; mileage
- Road, loose surface all weather first class
- Road, loose surface all weather second class
- Road, loose surface dry weather
- Road, unimproved earth
- Bridge road; bridge railway
- Railway single track
- Station; siding; station with siding
- Telephone line; power transmission line
- Fence; stone wall
- Levee or dyke; quarry
- Mine; windpump; yard
- Building (s); church; school
- Post office; wireless transceiver; cemetery
- Spot elevation in feet; accurate; approximate
- Bench mark; mud; gravel
- Sand; cliffs
- Sand ridges; sand dunes
- Relief shading
- Waterhole; water tank; dam; dry lake
- Lake, river or stream perennial
- Lake, river or stream intermittent
- Dam or weir; falls; rapids
- Drain or ditch perennial, intermittent
- Spring perennial, intermittent; ricefields
- Marsh or swamp

0 1 2 3 4 5 6 7 8 9 10 Kilometers

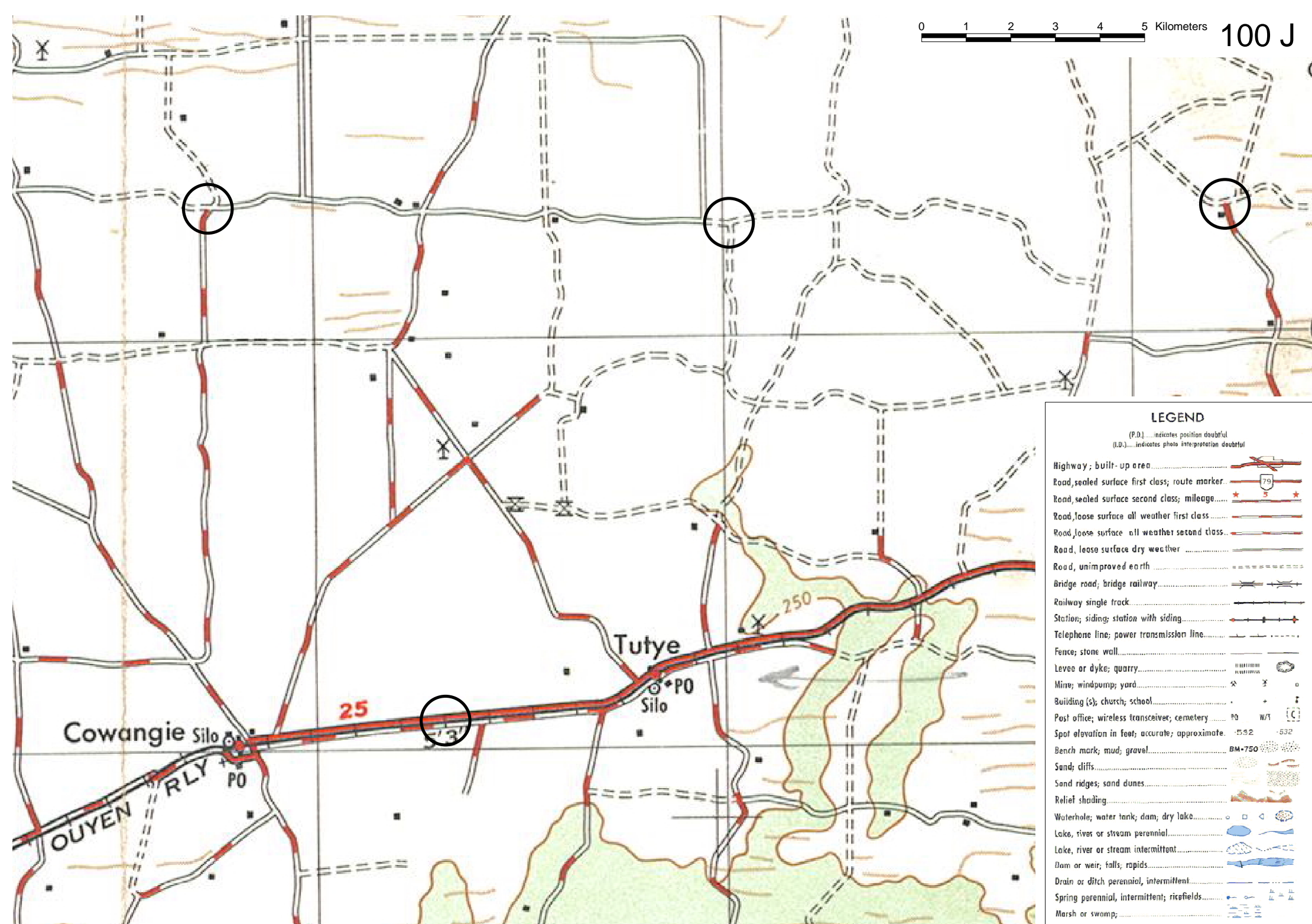
250 G





LEGEND
 (P.D.) indicates position doubtful
 (I.D.) indicates photo interpretation doubtful

- Highway, built-up area
- Road, sealed surface first class, route marker
- Road, sealed surface second class, mileage
- Road, loose surface all weather first class
- Road, loose surface all weather second class
- Road, loose surface dry weather
- Road, unimproved earth
- Bridge road; bridge railway
- Railway single track
- Station; siding; station with siding
- Telephone line; power transmission line
- Fence, stone wall
- Levee or dyke; quarry
- Mine; windpump; yard
- Building (s); church; school
- Post office; wireless transceiver; cemetery
- Spot elevation in feet, accurate; approximate
- Bench mark; mud; gravel
- Sand; cliffs
- Sand ridges; sand dunes
- Relief shading
- Waterhole; water tank; dam; dry lake
- Lake, river or stream perennial
- Lake, river or stream intermittent
- Dam or weir; falls, rapids
- Drain or ditch perennial, intermittent
- Spring perennial, intermittent; ricefields
- Marsh or swamp;



LEGEND

(P.D.)...indicates position doubtful
(I.D.)...indicates photo interpretation doubtful

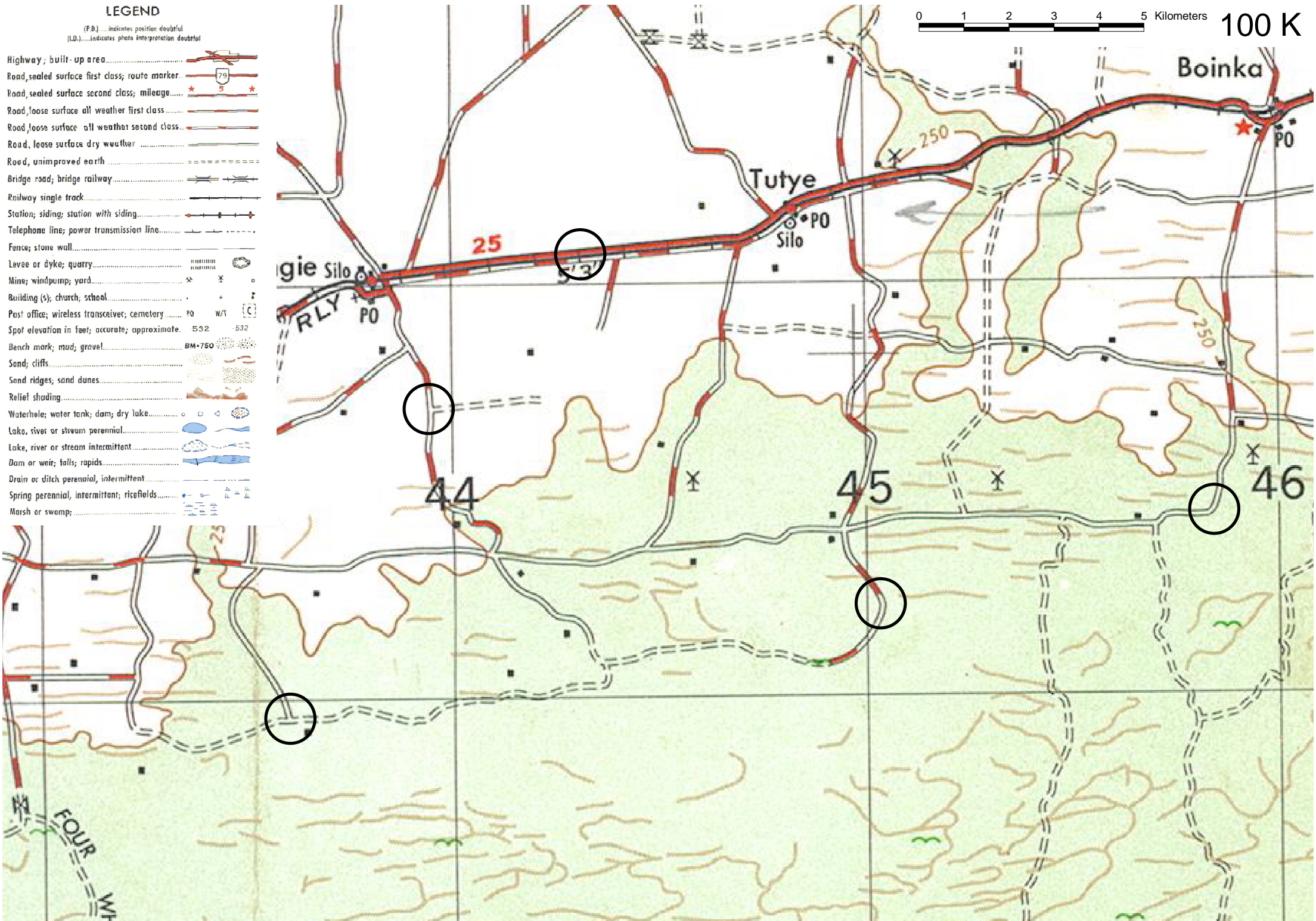
- Highway; built-up area.....
- Road, sealed surface first class; route marker.....
- Road, sealed surface second class; mileage.....
- Road, loose surface all weather first class.....
- Road, loose surface all weather second class.....
- Road, loose surface dry weather.....
- Road, unimproved earth.....
- Bridge road; bridge railway.....
- Railway single track.....
- Station; siding; station with siding.....
- Telephone line; power transmission line.....
- Fence; stone wall.....
- Levee or dyke; quarry.....
- Mine; windpump; yard.....
- Building (s); church; school.....
- Post office; wireless transceiver; cemetery.....
- Spot elevation in feet; accurate; approximate.....
- Bench mark; mud; gravel.....
- Sand; cliffs.....
- Sand ridges; sand dunes.....
- Relief shading.....
- Waterhole; water tank; dam; dry lake.....
- Lake, river or stream perennial.....
- Lake, river or stream intermittent.....
- Dam or weir; falls; rapids.....
- Drain or ditch perennial, intermittent.....
- Spring perennial, intermittent; ricefields.....
- Marsh or swamp.....

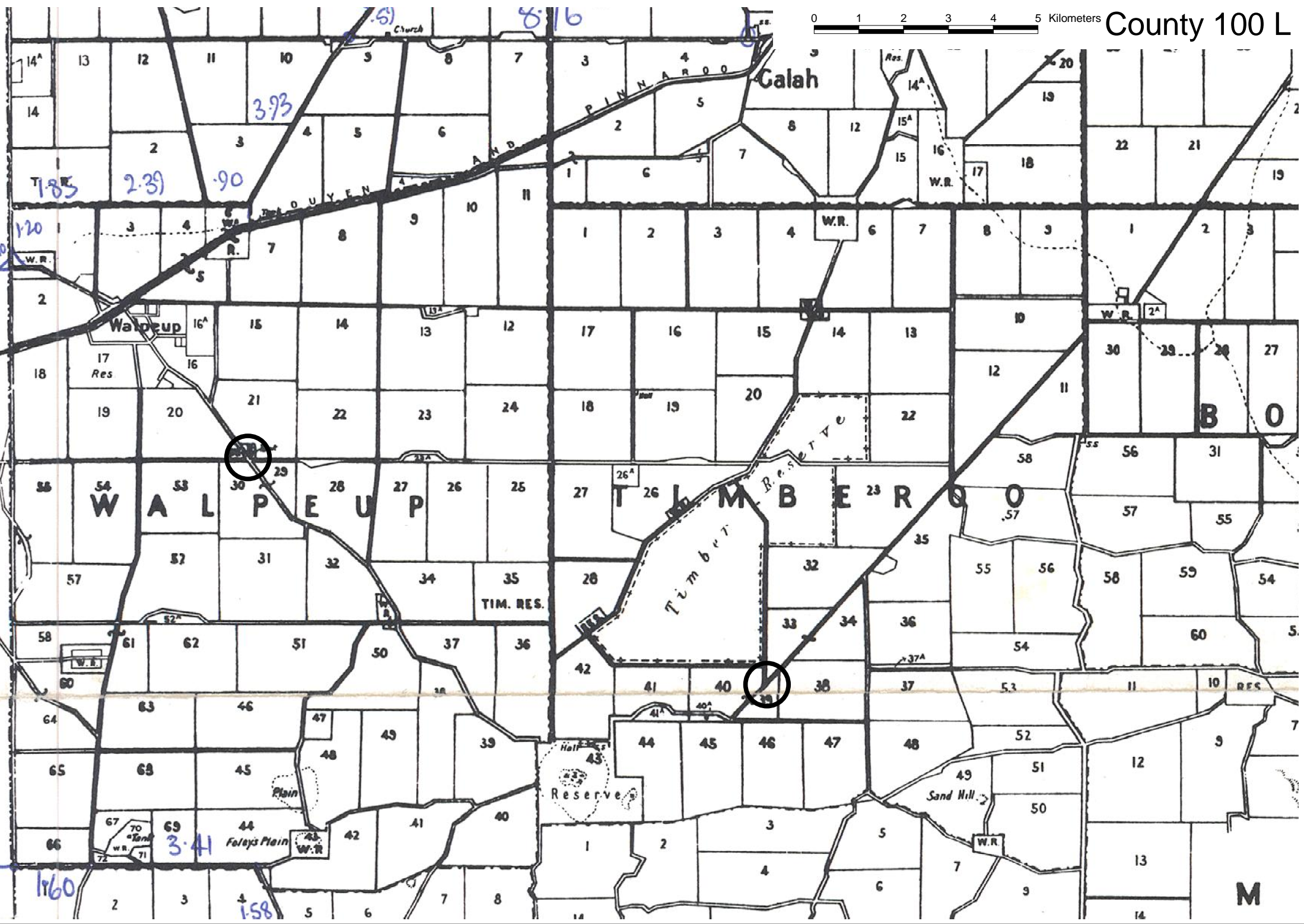
LEGEND

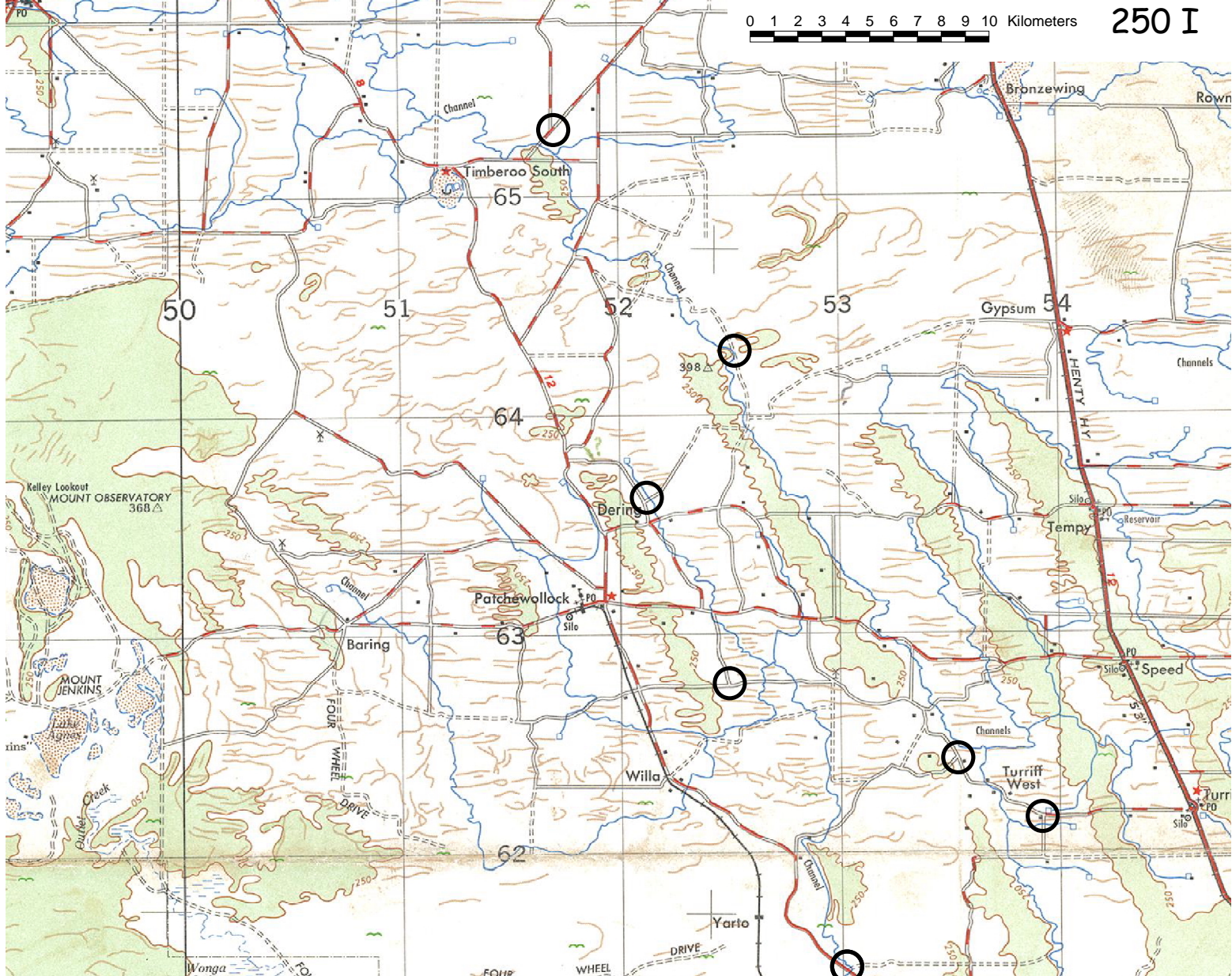
(P.D.)... indicates position doubtful
(L.D.)... indicates photo interpretation doubtful

- Highway; built-up area.....
- Road, sealed surface first class; route marker.....
- Road, sealed surface second class; mileage.....
- Road, loose surface all weather first class.....
- Road, loose surface all weather second class.....
- Road, loose surface dry weather.....
- Road, unimproved earth.....
- Bridge road; bridge railway.....
- Railway single track.....
- Station; siding; station with siding.....
- Telephone line; power transmission line.....
- Fence; stone wall.....
- Levee or dyke; quarry.....
- Mine; windpump; yard.....
- Building (s); church; school.....
- Post office; wireless transceiver; cemetery.....
- Spot elevation in feet; accurate; approximate.....
- Bench mark; mud; gravel.....
- Sand; cliffs.....
- Sand ridges; sand dunes.....
- Relief shading.....
- Waterhole; water tank; dam; dry lake.....
- Lake, river or stream perennial.....
- Lake, river or stream intermittent.....
- Dam or weir; falls; rapids.....
- Drain or ditch perennial, intermittent.....
- Spring perennial, intermittent; ricefields.....
- Marsh or swamp.....

0 1 2 3 4 5 Kilometers 100 K







LEGEND

(P.D.) indicates position doubtful
(I.D.) indicates photo interpretation doubtful

- Highway ; built-up area
- Road, sealed surface first class; route marker.....
- Road, sealed surface second class; mileage.....
- Road, loose surface all weather first class.....
- Road, loose surface all weather second class.....
- Road, loose surface dry weather
- Road, unimproved earth
- Bridge road; bridge railway.....
- Railway single track.....
- Station; siding; station with siding.....
- Telephone line; power transmission line.....
- Fence; stone wall.....
- Levee or dyke; quarry.....
- Mine; windpump; yard.....
- Building (s); church; school.....
- Post office; wireless transceiver; cemetery.....
- Spot elevation in feet; accurate; approximate.....
- Bench mark; mud; gravel.....
- Sand; cliffs.....
- Sand ridges; sand dunes.....
- Relief shading.....
- Waterhole; water tank; dam; dry lake.....
- Lake, river or stream perennial.....
- Lake, river or stream intermittent.....
- Dam or weir; falls; rapids.....
- Drain or ditch perennial, intermittent.....
- Spring perennial, intermittent; ricefields.....
- Marsh or swamp;.....

