

# **HRA 2008 BP ULTIMATE RALLY of South Eastern Australia**

## **Supplied Maps**

### **Division Four**

#### **(Hopetoun to Ballarat)**

This package consist of 8 pages including this page containing the following labelled maps:

250 J

100 N

100 P

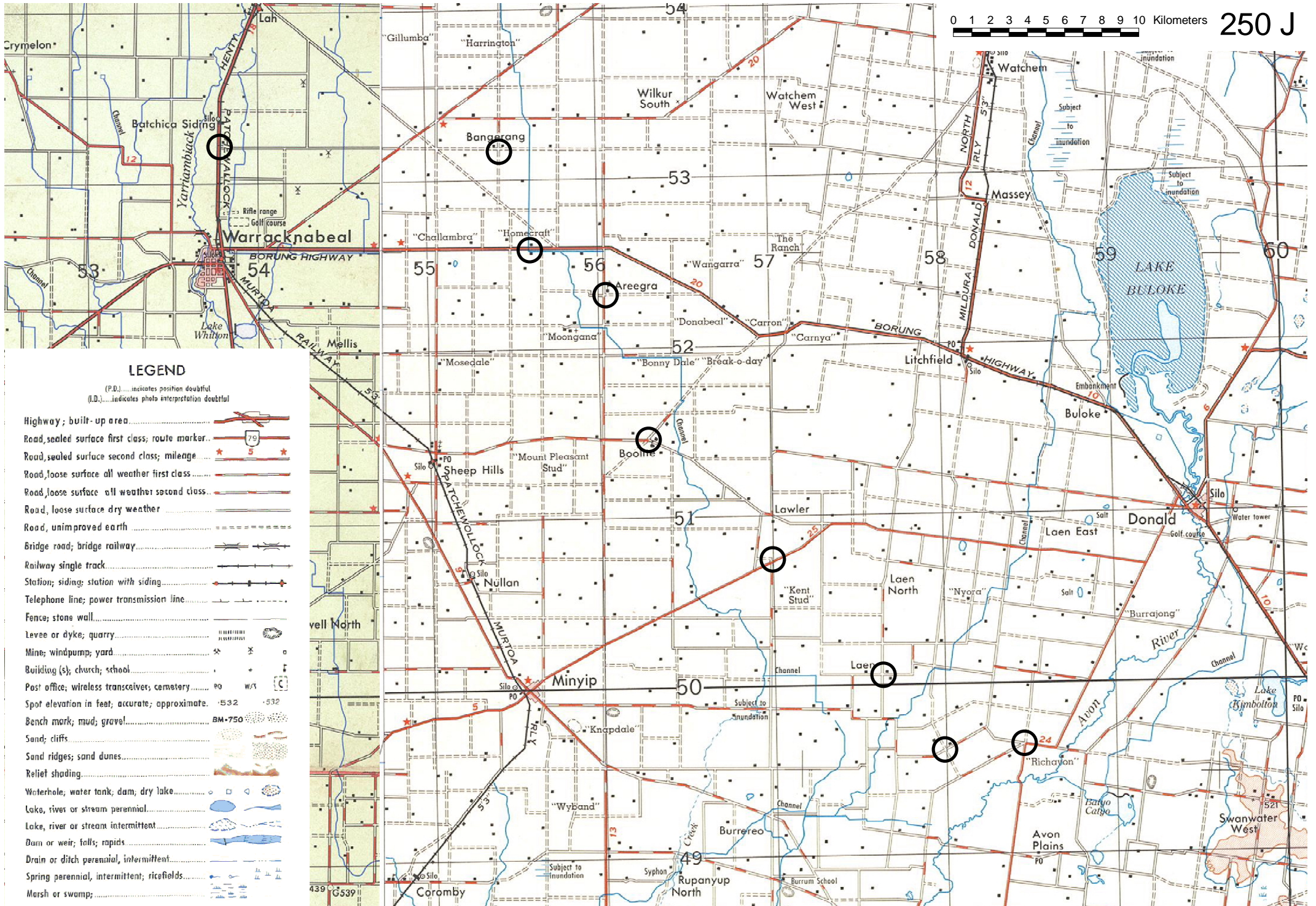
100 Q

100 R

100 S

100 T

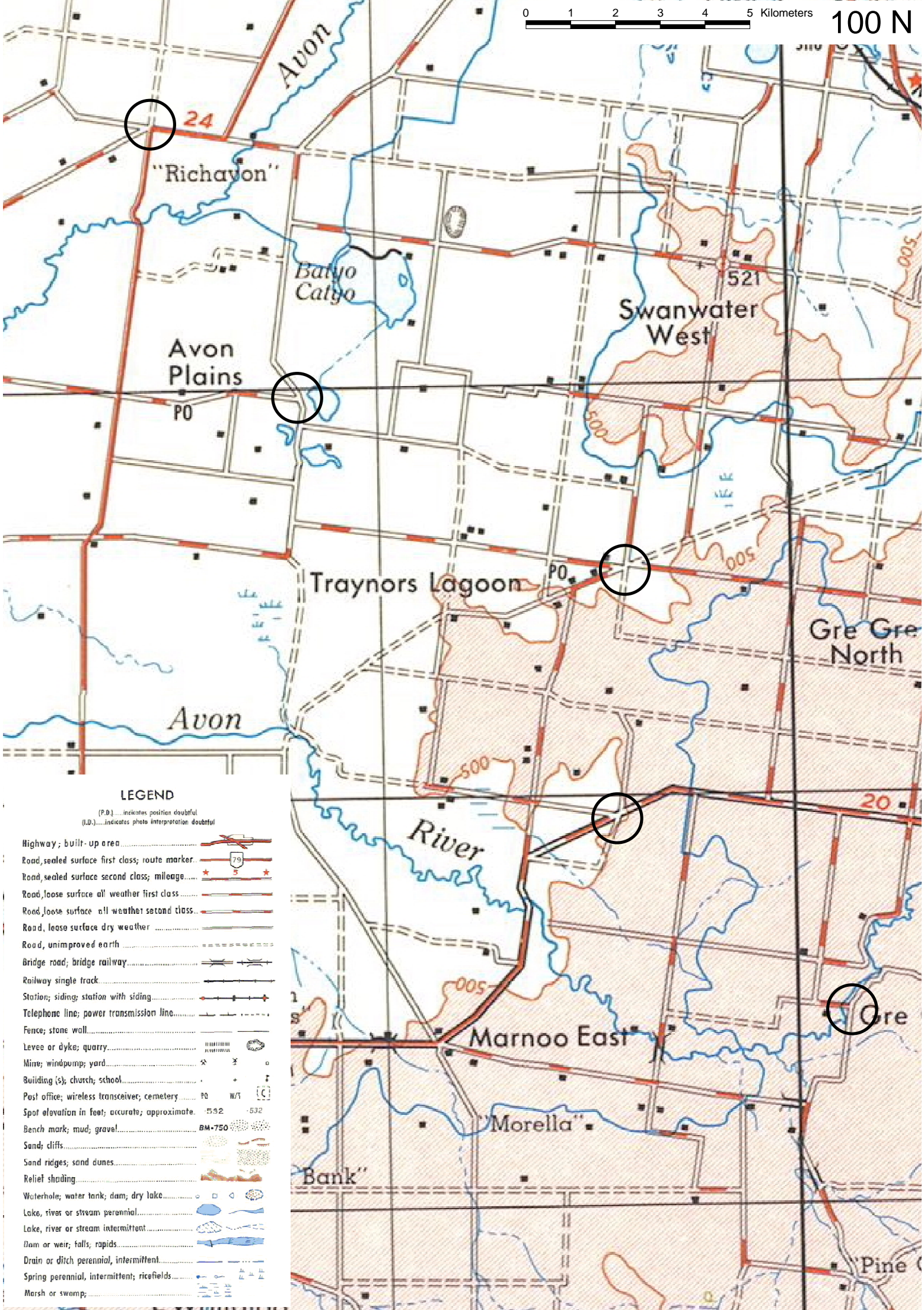
Please check that you have a complete set.



**LEGEND**

(P.D.)... indicates position doubtful  
(I.D.)... indicates photo interpretation doubtful

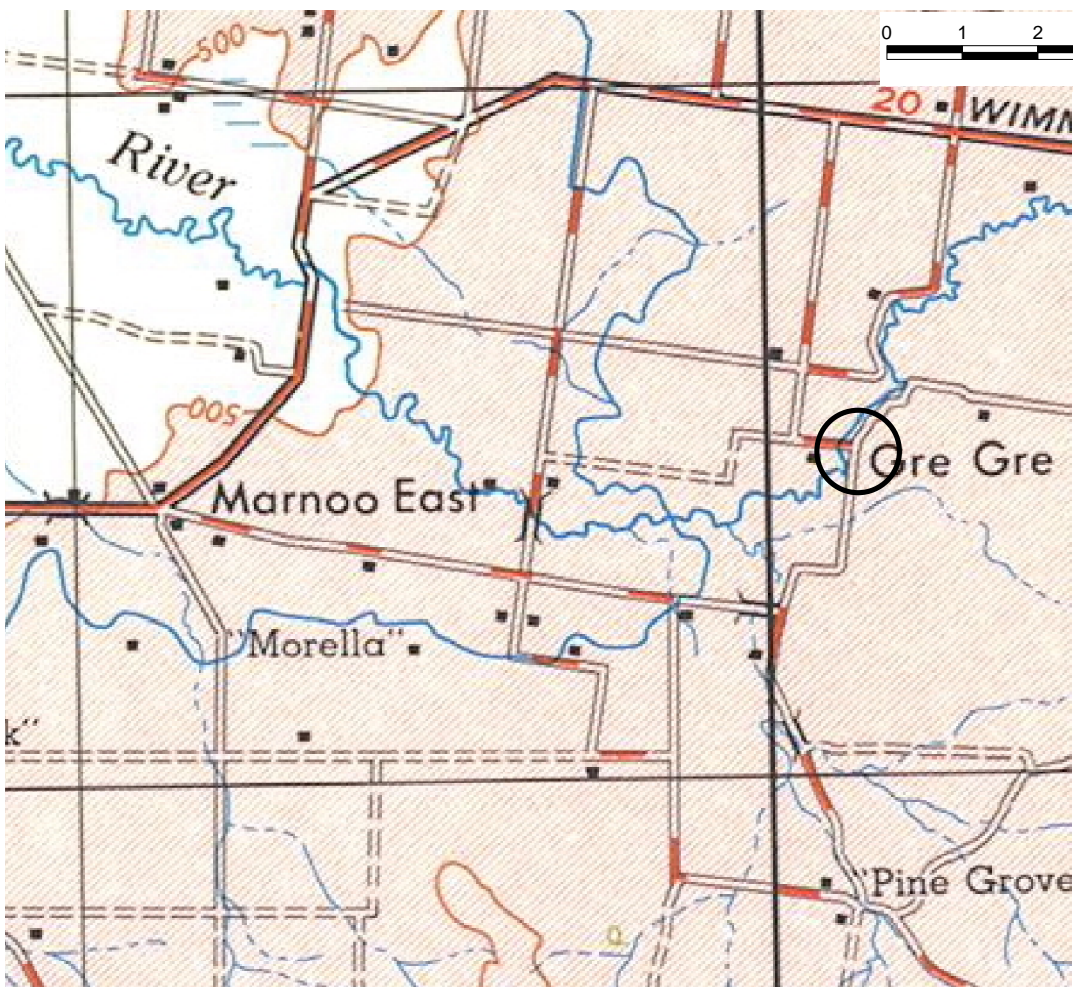
- Highway; built-up area
- Road, sealed surface first class; route marker
- Road, sealed surface second class; mileage
- Road, loose surface all weather first class
- Road, loose surface all weather second class
- Road, loose surface dry weather
- Road, unimproved earth
- Bridge road; bridge railway
- Railway single track
- Station; siding; station with siding
- Telephone line; power transmission line
- Fence; stone wall
- Levee or dyke; quarry
- Mine; windpump; yard
- Building (s); church; school
- Post office; wireless transceiver; cemetery
- Spot elevation in feet; accurate; approximate
- Bench mark; mud; gravel
- Sand; cliffs
- Sand ridges; sand dunes
- Relief shading
- Waterhole; water tank; dam; dry lake
- Lake, river or stream perennial
- Lake, river or stream intermittent
- Dam or weir; falls; rapids
- Drain or ditch perennial, intermittent
- Spring perennial, intermittent; ricefields
- Marsh or swamp



LEGEND

(P.D.)...indicates position doubtful  
(I.D.)...indicates photo interpretation doubtful

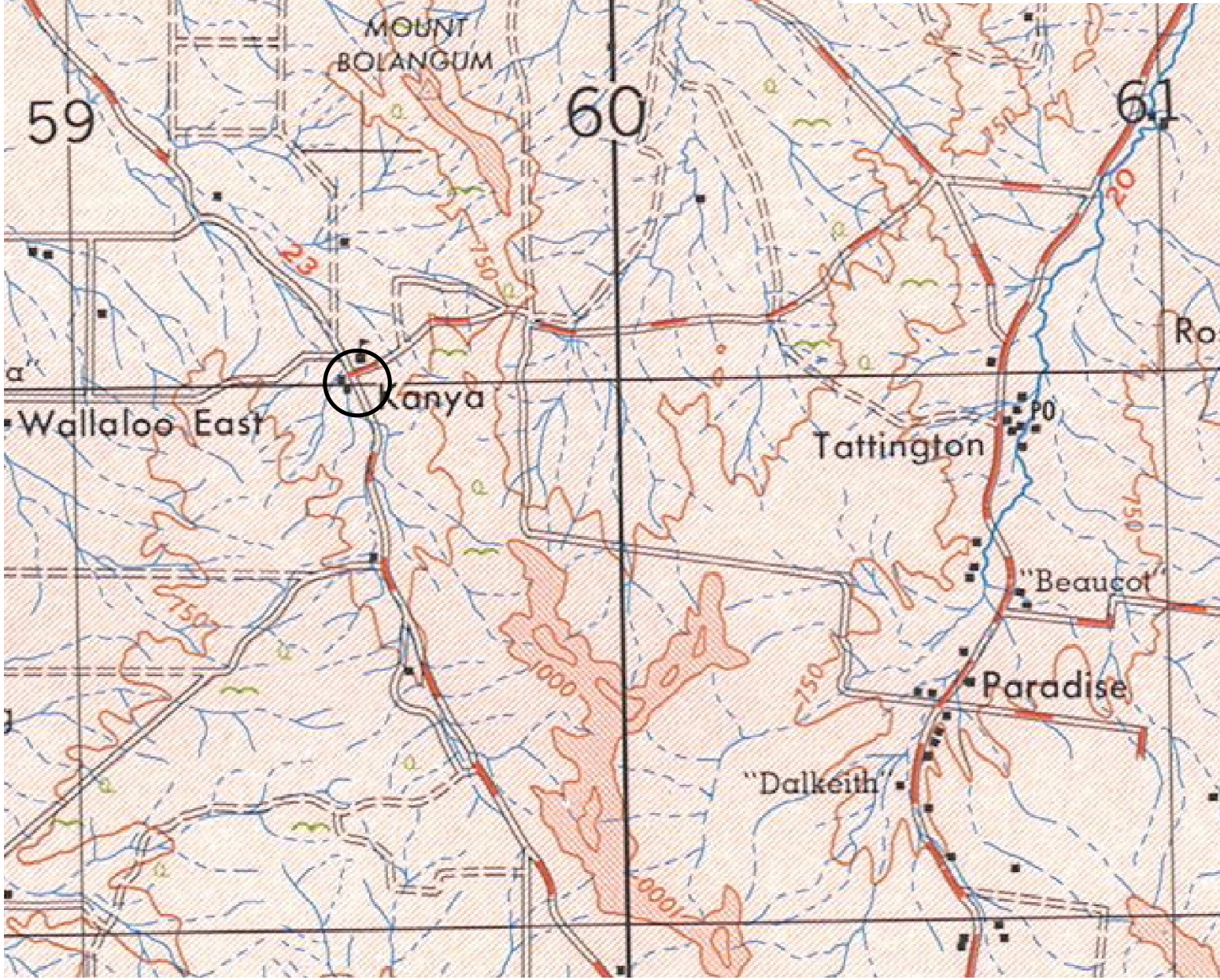
- Highway; built-up area.....
- Road, sealed surface first class; route marker.....
- Road, sealed surface second class; mileage.....
- Road, loose surface all weather first class.....
- Road, loose surface all weather second class.....
- Road, loose surface dry weather.....
- Road, unimproved earth.....
- Bridge road; bridge railway.....
- Railway single track.....
- Station; siding; station with siding.....
- Telephone line; power transmission line.....
- Fence; stone wall.....
- Levee or dyke; quarry.....
- Mine; windpump; yard.....
- Building (s); church; school.....
- Post office; wireless transceiver; cemetery.....
- Spot elevation in feet; accurate; approximate.....
- Bench mark; mud; gravel.....
- Sand; cliffs.....
- Sand ridges; sand dunes.....
- Relief shading.....
- Waterhole; water tank; dam; dry lake.....
- Lake, river or stream perennial.....
- Lake, river or stream intermittent.....
- Dam or weir; falls; rapids.....
- Drain or ditch perennial, intermittent.....
- Spring perennial, intermittent; ricefields.....
- Marsh or swamp.....

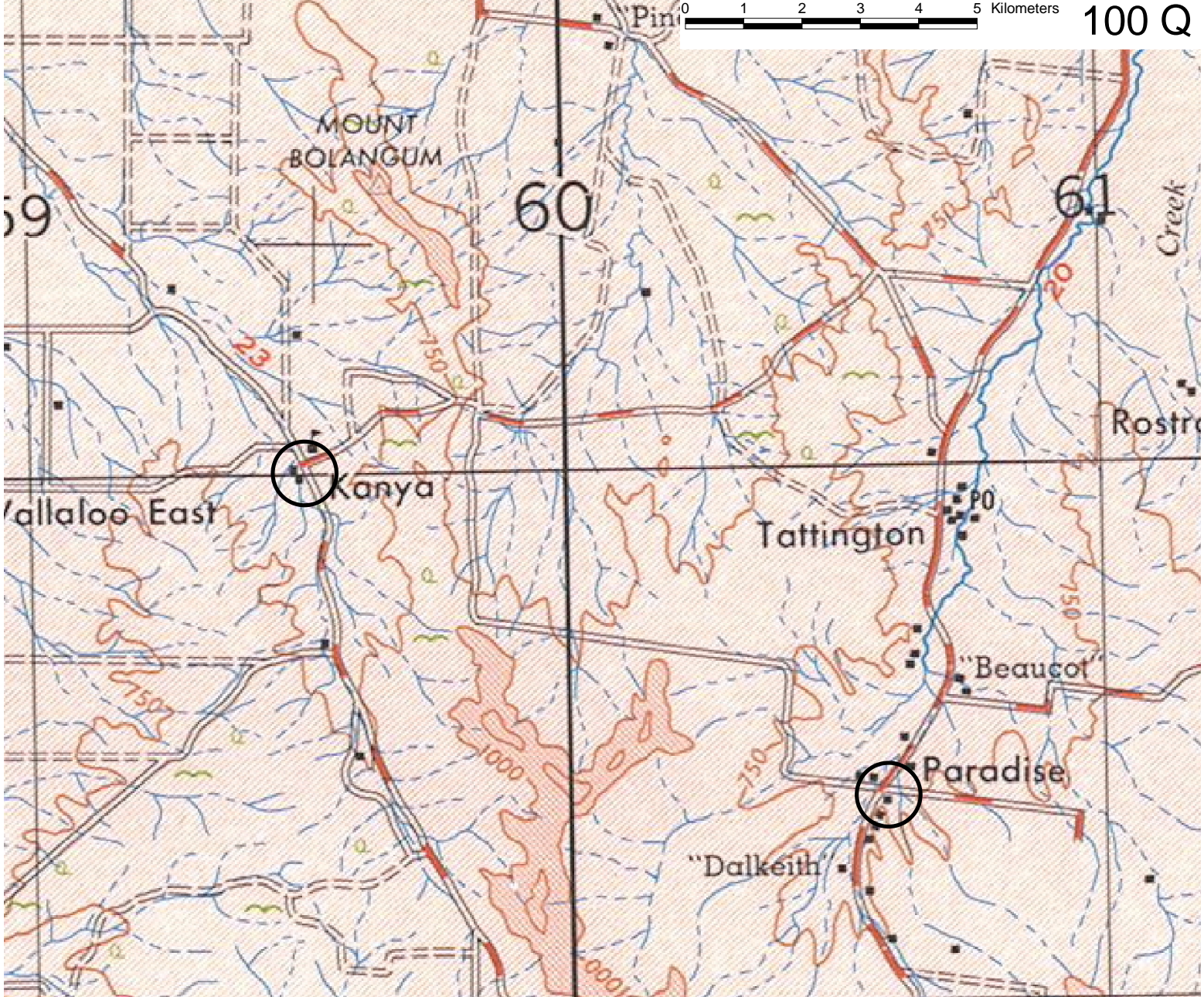


### LEGEND

(P.D.).....indicates position doubtful  
(I.D.).....indicates photo interpretation doubtful

- Highway; built-up area.....
- Road, sealed surface first class; route marker.....
- Road, sealed surface second class; mileage.....
- Road, loose surface all weather first class.....
- Road, loose surface all weather second class.....
- Road, loose surface dry weather.....
- Road, unimproved earth.....
- Bridge road; bridge railway.....
- Railway single track.....
- Station; siding; station with siding.....
- Telephone line; power transmission line.....
- Fence; stone wall.....
- Levee or dyke; quarry.....
- Mine; windpump; yard.....
- Building (s); church; school.....
- Post office; wireless transceiver; cemetery.....
- Spot elevation in feet; accurate; approximate.....
- Bench mark; mud; gravel.....
- Sand; cliffs.....
- Sand ridges; sand dunes.....
- Relief shading.....
- Waterhole; water tank; dam; dry lake.....
- Lake, river or stream perennial.....
- Lake, river or stream intermittent.....
- Dam or weir; falls; rapids.....
- Drain or ditch perennial, intermittent.....
- Spring perennial, intermittent; ricefields.....
- Marsh or swamp;.....

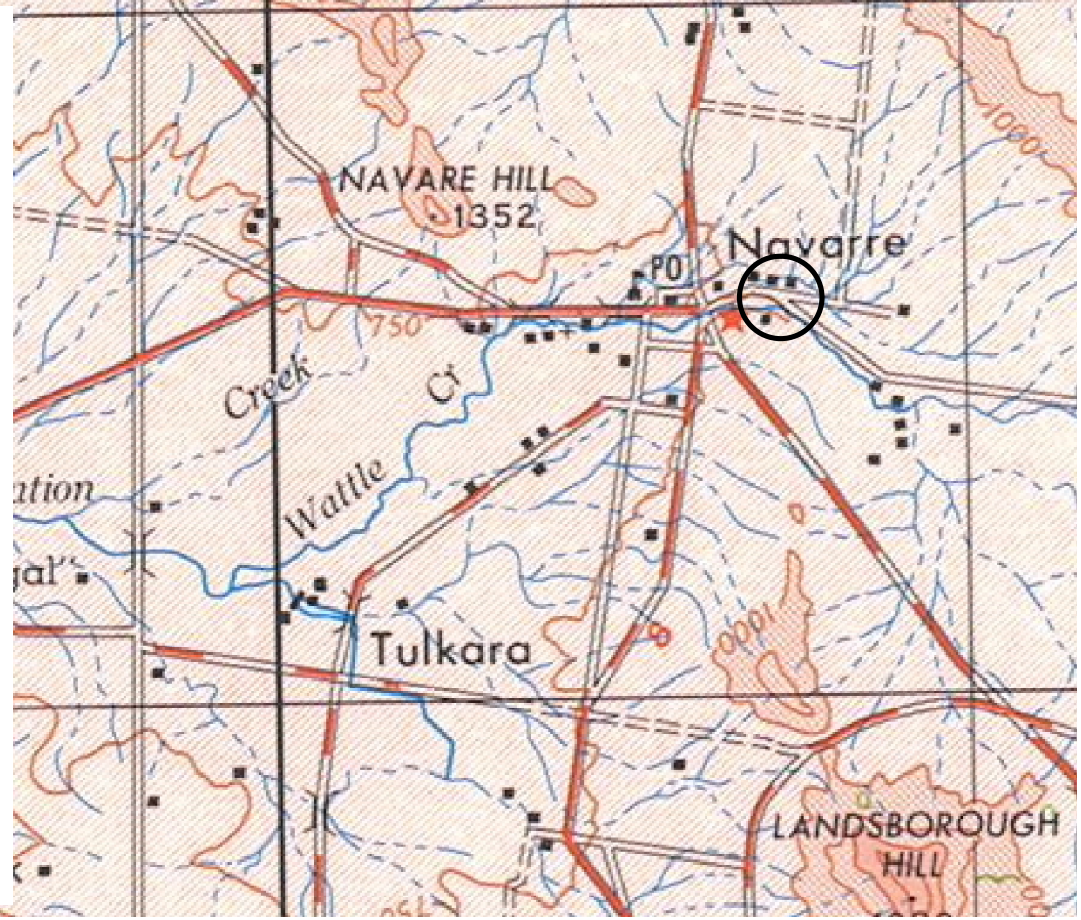


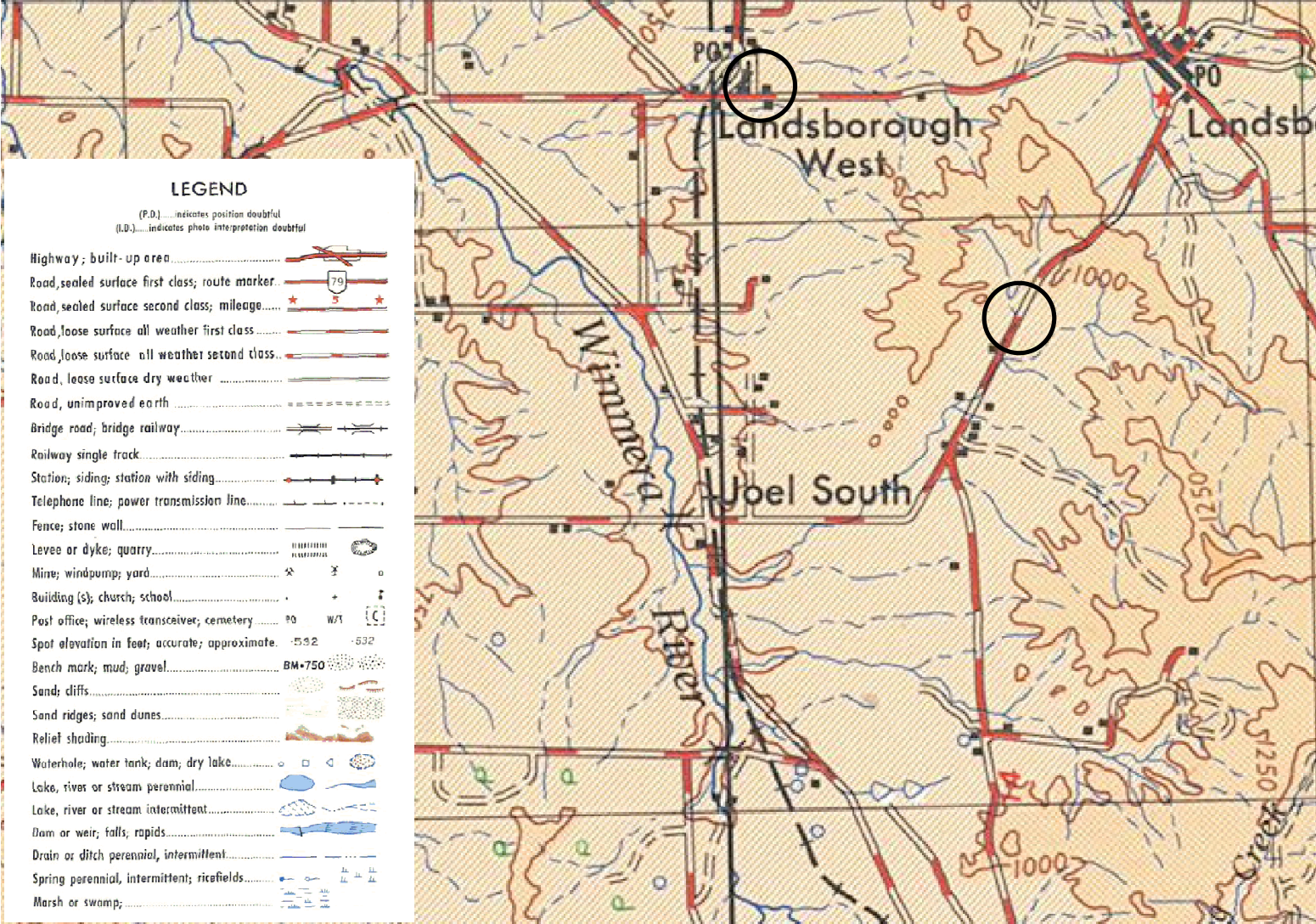
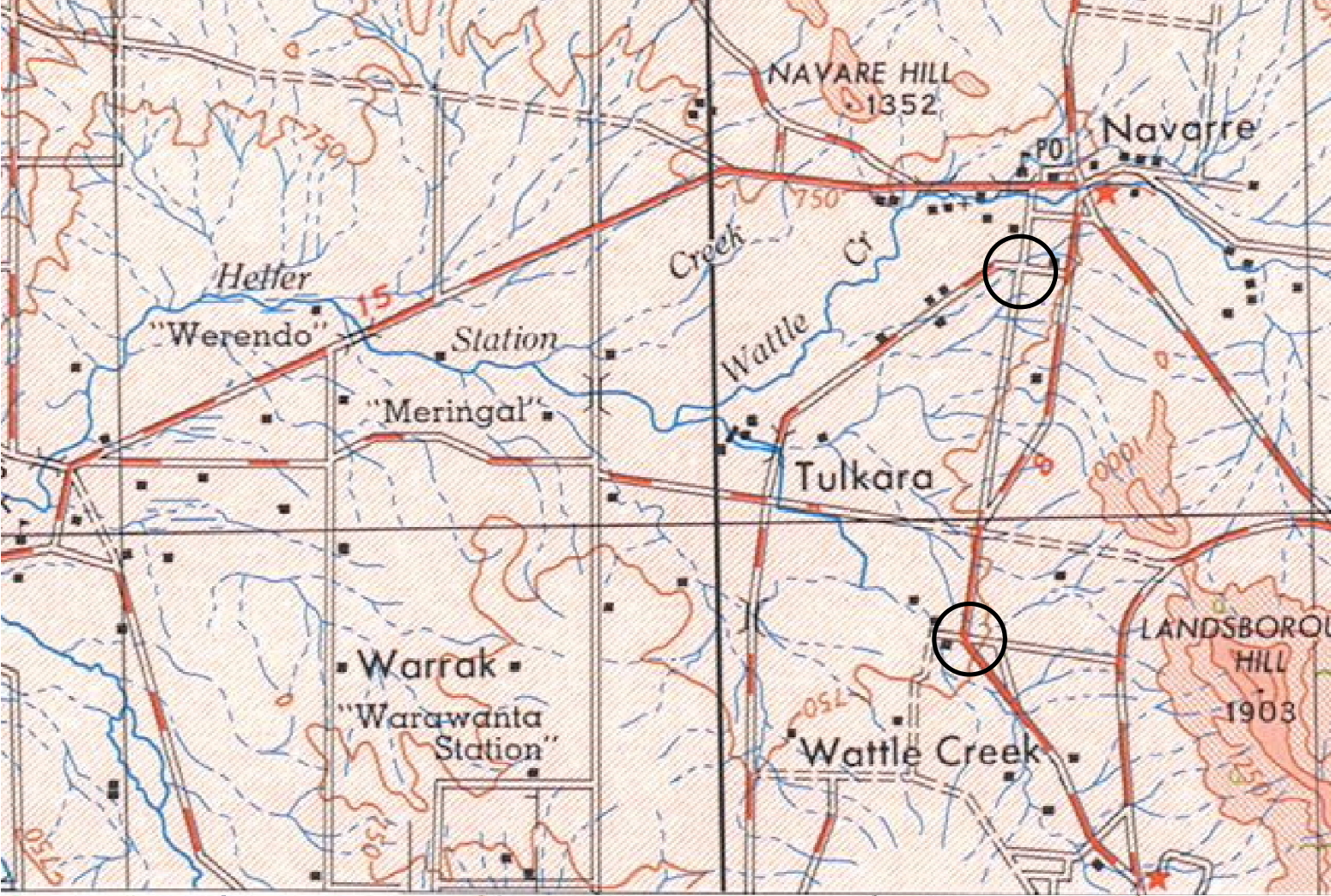


LEGEND

(P.D.) indicates position doubtful  
(I.D.) indicates photo interpretation doubtful

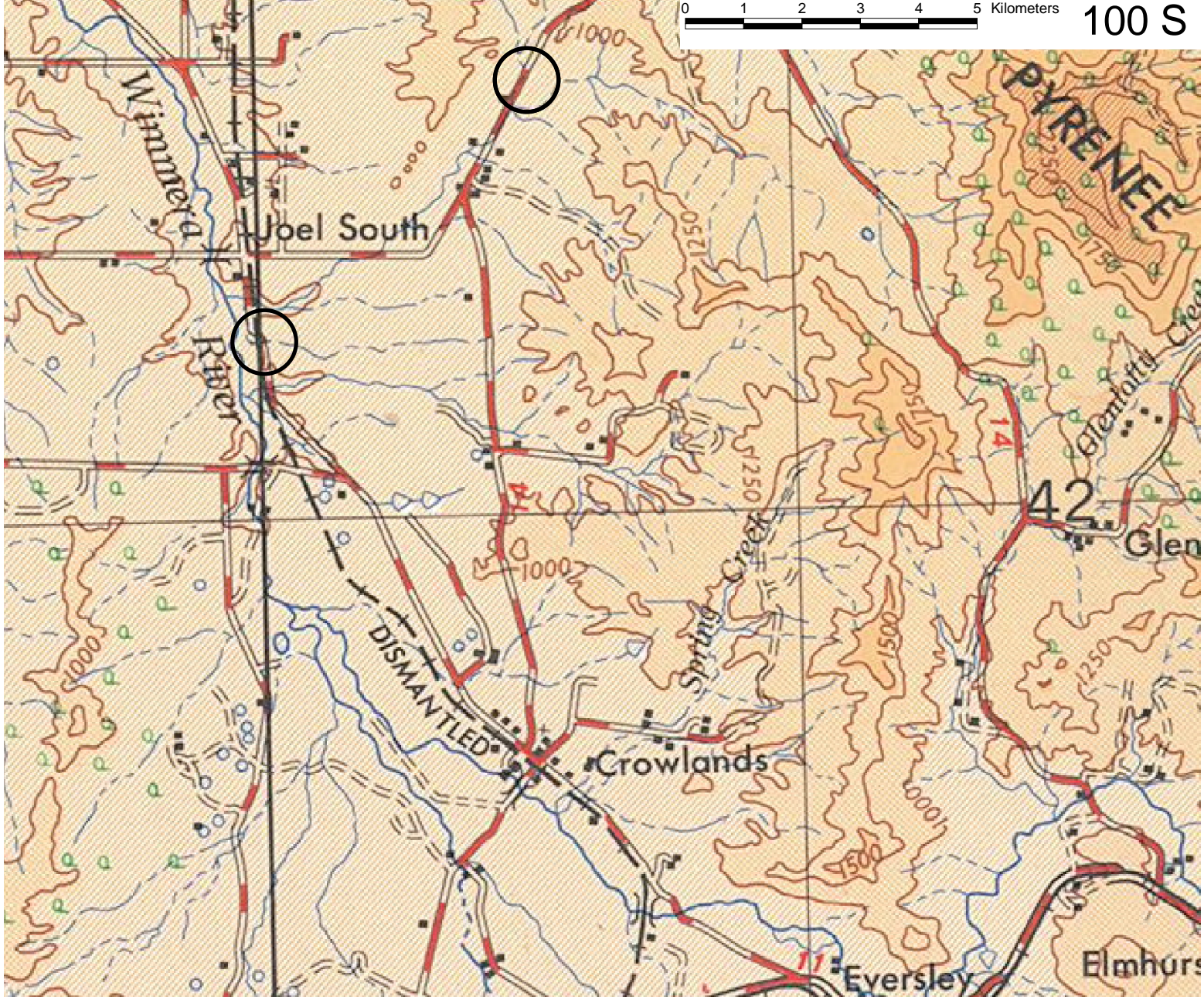
- Highway; built-up area.....
- Road, sealed surface first class; route marker.....
- Road, sealed surface second class; mileage.....
- Road, loose surface all weather first class.....
- Road, loose surface all weather second class.....
- Road, loose surface dry weather.....
- Road, unimproved earth.....
- Bridge road; bridge railway.....
- Railway single track.....
- Station; siding; station with siding.....
- Telephone line; power transmission line.....
- Fence; stone wall.....
- Levee or dyke; quarry.....
- Mine; windpump; yard.....
- Building (s); church; school.....
- Post office; wireless transceiver; cemetery.....
- Spot elevation in feet; accurate; approximate.....
- Bench mark; mud; gravel.....
- Sand; cliffs.....
- Sand ridges; sand dunes.....
- Relief shading.....
- Waterhole; water tank; dam; dry lake.....
- Lake, river or stream perennial.....
- Lake, river or stream intermittent.....
- Dam or weir; falls; rapids.....
- Drain or ditch perennial, intermittent.....
- Spring perennial, intermittent; ricefields.....
- Marsh or swamp.....





**LEGEND**

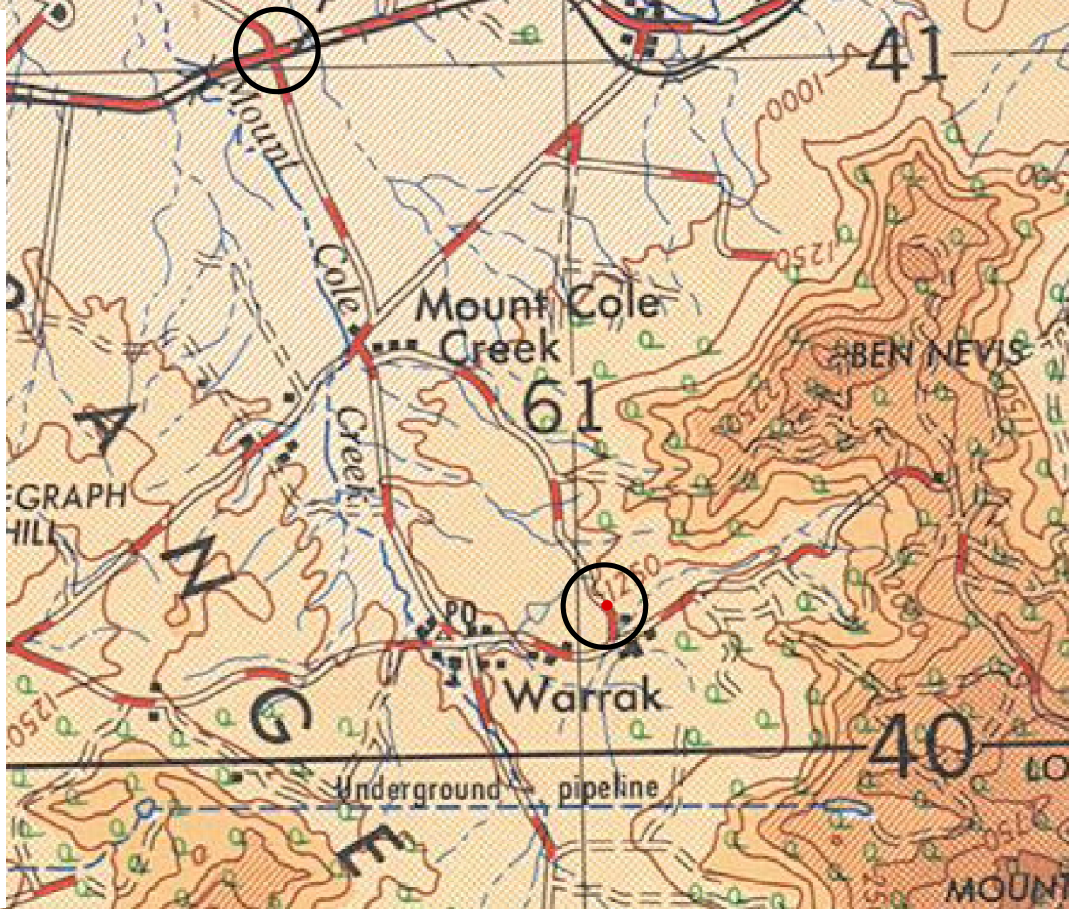
- (P.D.) ..... indicates position doubtful
- (I.D.) ..... indicates photo interpretation doubtful
- Highway, built-up area.....
- Road, sealed surface first class; route marker.....
- Road, sealed surface second class; mileage.....
- Road, loose surface all weather first class.....
- Road, loose surface all weather second class.....
- Road, loose surface dry weather.....
- Road, unimproved earth.....
- Bridge road; bridge railway.....
- Railway single track.....
- Station; siding; station with siding.....
- Telephone line; power transmission line.....
- Fence; stone wall.....
- Levee or dyke; quarry.....
- Mine; windpump; yard.....
- Building (s); church; school.....
- Post office; wireless transceiver; cemetery.....
- Spot elevation in feet; accurate; approximate.....
- Bench mark; mud; gravel.....
- Sand; duffs.....
- Sand ridges; sand dunes.....
- Relief shading.....
- Waterhole; water tank; dam; dry lake.....
- Lake, river or stream perennial.....
- Lake, river or stream intermittent.....
- Dam or weir; falls; rapids.....
- Drain or ditch perennial, intermittent.....
- Spring perennial, intermittent; ricefields.....
- Marsh or swamp.....

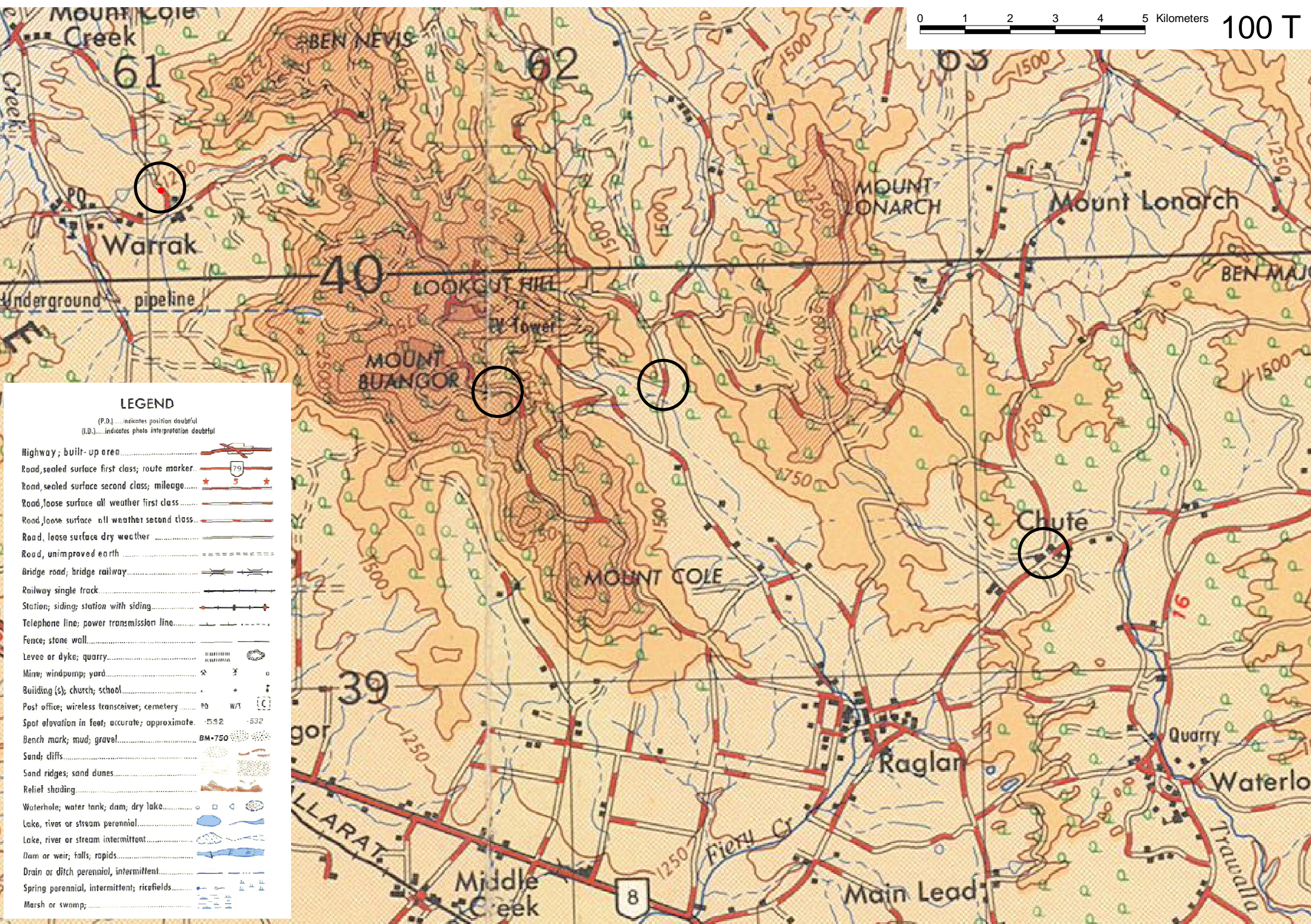


LEGEND

(P.D.).....indicates position doubtful  
(I.D.).....indicates photo interpretation doubtful

Highway; built-up area.....	
Road, sealed surface first class; route marker.....	
Road, sealed surface second class; mileage.....	
Road, loose surface all weather first class.....	
Road, loose surface all weather second class.....	
Road, loose surface dry weather.....	
Road, unimproved earth.....	
Bridge road; bridge railway.....	
Railway single track.....	
Station; siding; station with siding.....	
Telephone line; power transmission line.....	
Fence; stone wall.....	
Levee or dyke; quarry.....	
Mine; windpump; yard.....	
Building (s); church; school.....	
Post office; wireless transmitter; cemetery.....	
Spot elevation in feet; accurate; approximate.....	
Bench mark; mud; gravel.....	
Sand; cliffs.....	
Sand ridges; sand dunes.....	
Relief shading.....	
Waterhole; water tank; dam; dry lake.....	
Lake, river or stream perennial.....	
Lake, river or stream intermittent.....	
Dam or weir; falls; rapids.....	
Drain or ditch perennial, intermittent.....	
Spring perennial, intermittent; ricefields.....	
Marsh or swamp.....	





**LEGEND**

(P.D.) indicates position doubtful  
(I.D.) indicates photo interpretation doubtful

Highway; built-up area	
Road, sealed surface first class; route marker	
Road, sealed surface second class; mileage	
Road, loose surface all weather first class	
Road, loose surface all weather second class	
Road, loose surface dry weather	
Road, unimproved earth	
Bridge road; bridge railway	
Railway single track	
Station; siding; station with siding	
Telephone line; power transmission line	
Fence; stone wall	
Levee or dyke; quarry	
Mine; windpump; yard	
Building(s); church; school	
Past office; wireless transmitter; cemetery	
Spot elevation in feet; accurate; approximate	
Bench mark; mud; gravel	
Sand; cliffs	
Sand ridges; sand dunes	
Relief shading	
Waterhole; water tank; dam; dry lake	
Lake, river or stream perennial	
Lake, river or stream intermittent	
Dam or weir; falls; rapids	
Drain or ditch perennial, intermittent	
Spring perennial, intermittent; ricefields	
Marsh or swamp	