

HRA 2013 OLD BP RALLY

Supplied Maps

Division One

(Healesville to Benalla)

This package consist of 6 pages including this page containing the following labelled maps:

100 A

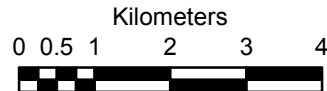
250 A

100 B

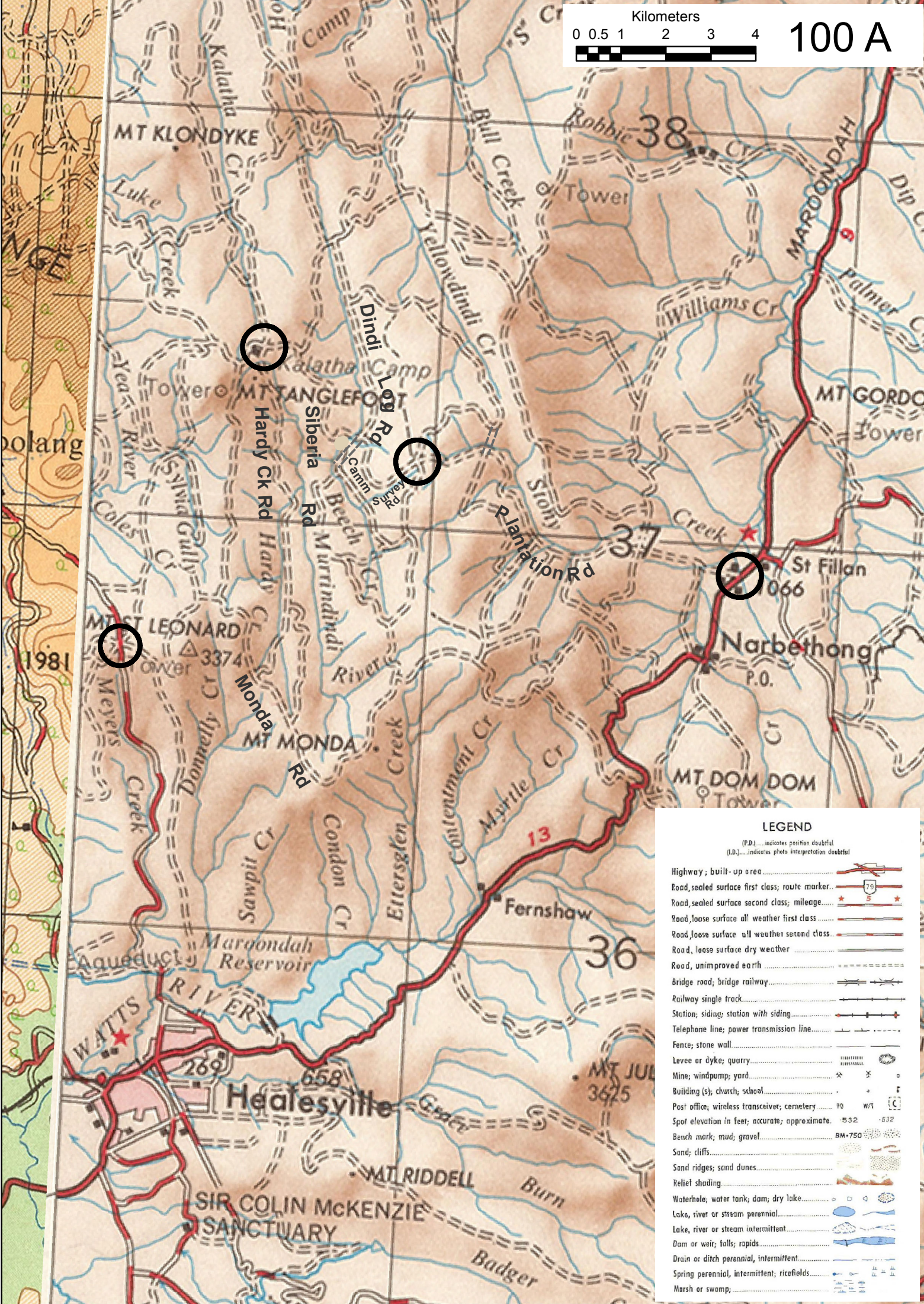
100 C

100 D

Please check that you have a complete set.



100 A



LEGEND

(P.D.)...indicates position doubtful
(I.D.)...indicates photo interpretation doubtful

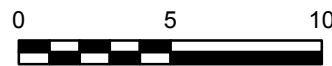
| | |
|---|--|
| Highway; built-up area..... | |
| Road, sealed surface first class; route marker..... | |
| Road, sealed surface second class; mileage..... | |
| Road, loose surface all weather first class..... | |
| Road, loose surface all weather second class..... | |
| Road, loose surface dry weather..... | |
| Road, unimproved earth..... | |
| Bridge road; bridge railway..... | |
| Railway single track..... | |
| Station; siding; station with siding..... | |
| Telephone line; power transmission line..... | |
| Fence; stone wall..... | |
| Levee or dyke; quarry..... | |
| Mine; windpump; yard..... | |
| Building (s); church; school..... | |
| Post office; wireless transceiver; cemetery..... | |
| Spot elevation in feet; accurate; approximate..... | |
| Bench mark; mud; gravel..... | |
| Sand; cliffs..... | |
| Sand ridges; sand dunes..... | |
| Relief shading..... | |
| Waterhole; water tank; dam; dry lake..... | |
| Lake, river or stream perennial..... | |
| Lake, river or stream intermittent..... | |
| Dam or weir; falls; rapids..... | |
| Drain or ditch perennial, intermittent..... | |
| Spring perennial, intermittent; ricefields..... | |
| Marsh or swamp..... | |

LEGEND

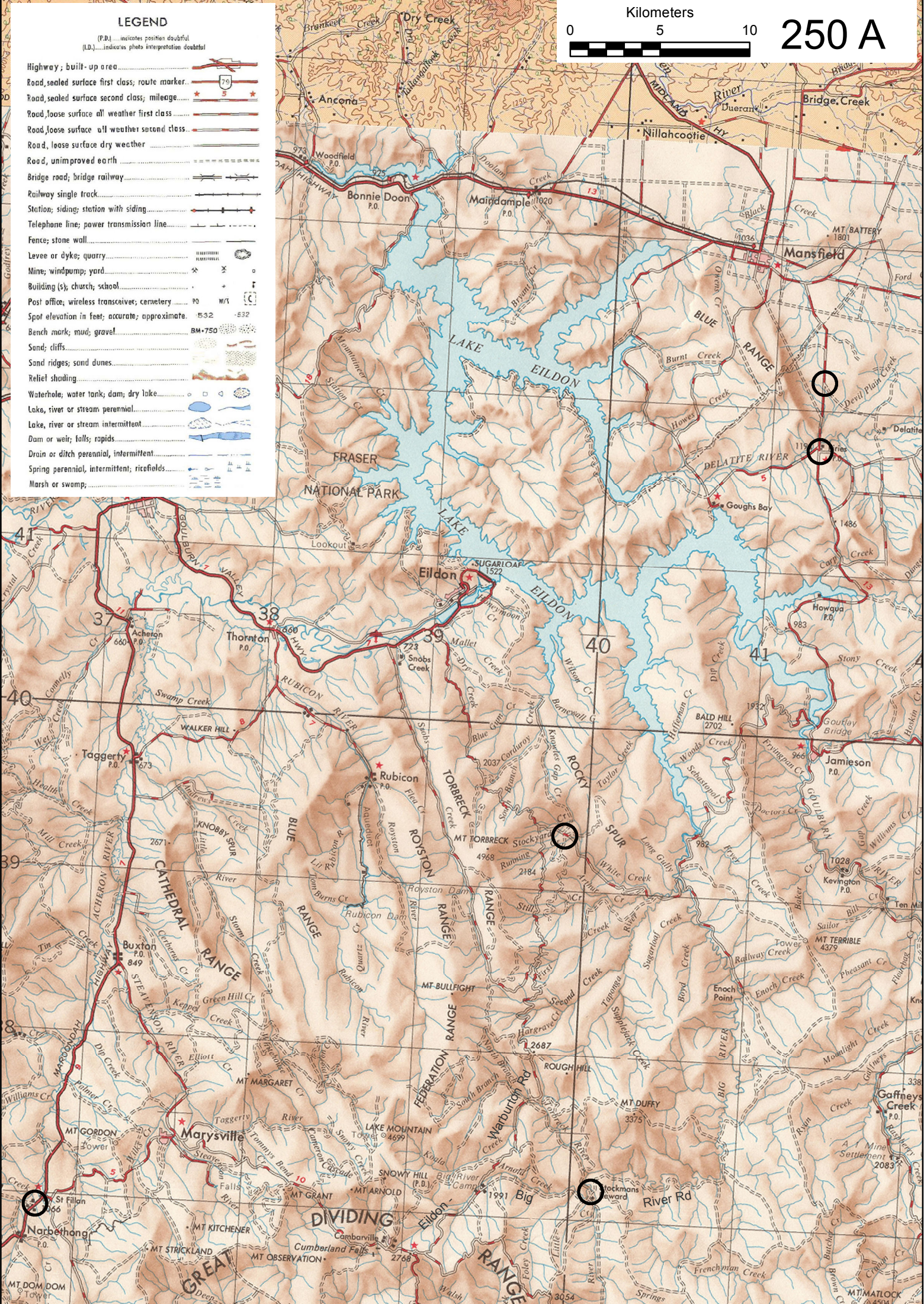
(P.D.) indicates position doubtful
(L.D.) indicates photo interpretation doubtful

- Highway, built-up area
- Road, sealed surface first class; route marker
- Road, sealed surface second class; mileage
- Road, loose surface all weather first class
- Road, loose surface all weather second class
- Road, loose surface dry weather
- Road, unimproved earth
- Bridge road; bridge railway
- Railway single track
- Station; siding; station with siding
- Telephone line; power transmission line
- Fence; stone wall
- Levee or dyke; quarry
- Mine; windpump; yard
- Building (s); church; school
- Post office; wireless transmitter; cemetery
- Spot elevation in feet; accurate; approximate
- Bench mark; mud; gravel
- Sand; cliffs
- Sand ridges; sand dunes
- Relief shading
- Waterhole; water tank; dam; dry lake
- Lake, river or stream perennial
- Lake, river or stream intermittent
- Dam or weir; falls; rapids
- Drain or ditch perennial, intermittent
- Spring perennial, intermittent; ricefields
- Marsh or swamp

Kilometers



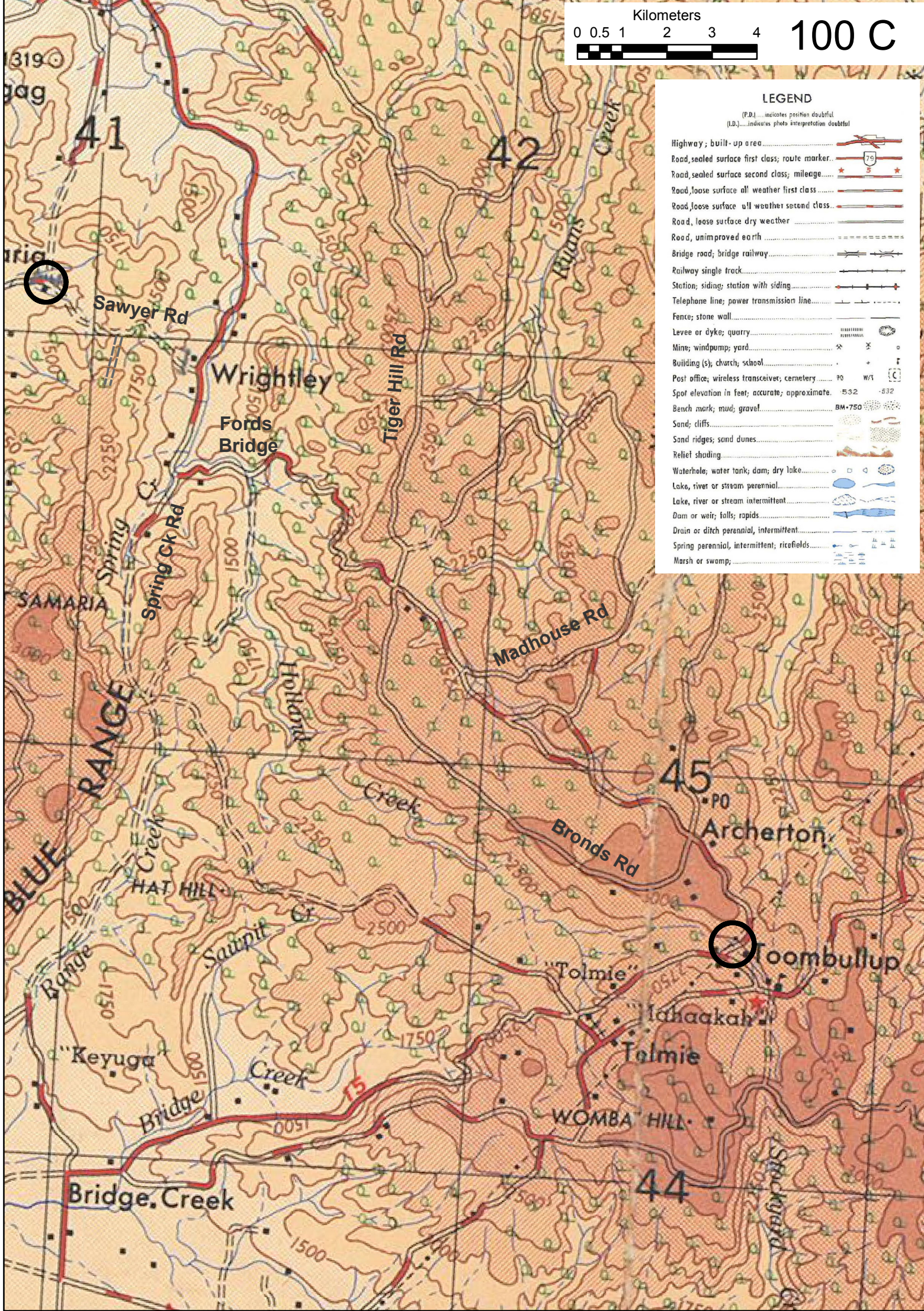
250 A

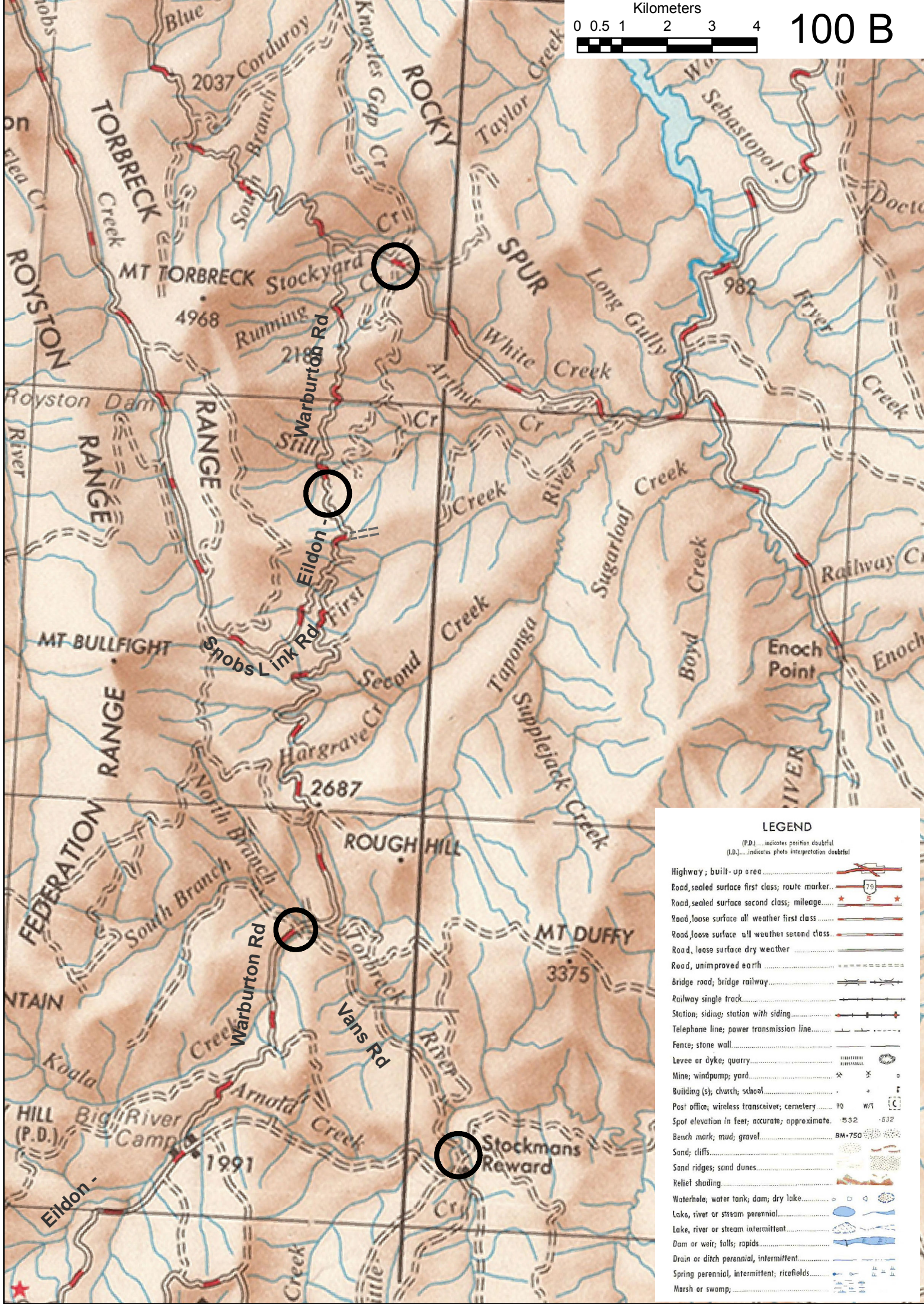


LEGEND

(P.D.) ... indicates position doubtful
(L.D.) ... indicates photo interpretation doubtful

- Highway; built-up area.....
- Road, sealed surface first class; route marker.....
- Road, sealed surface second class; mileage.....
- Road, loose surface all weather first class.....
- Road, loose surface all weather second class.....
- Road, loose surface dry weather.....
- Road, unimproved earth.....
- Bridge road; bridge railway.....
- Railway single track.....
- Station; siding; station with siding.....
- Telephone line; power transmission line.....
- Fence; stone wall.....
- Levee or dyke; quarry.....
- Mine; windpump; yard.....
- Building (s); church; school.....
- Post office; wireless transceiver; cerveterly.....
- Spot elevation in feet; accurate; approximate.....
- Bench mark; mud; gravel.....
- Sand; cliffs.....
- Sand ridges; sand dunes.....
- Relief shading.....
- Waterhole; water tank; dam; dry lake.....
- Lake, river or stream perennial.....
- Lake, river or stream intermittent.....
- Dam or weir; falls; rapids.....
- Drain or ditch perennial, intermittent.....
- Spring perennial, intermittent; ricefields.....
- Marsh or swamp;.....





LEGEND

(P.D.)...indicates position doubtful
(I.D.)...indicates photo interpretation doubtful

- Highway; built-up area.....
- Road, sealed surface first class; route marker.....
- Road, sealed surface second class; mileage.....
- Road, loose surface all weather first class.....
- Road, loose surface all weather second class.....
- Road, loose surface dry weather.....
- Road, unimproved earth.....
- Bridge road; bridge railway.....
- Railway single track.....
- Station; siding; station with siding.....
- Telephone line; power transmission line.....
- Fence; stone wall.....
- Levee or dyke; quarry.....
- Mine; windpump; yard.....
- Building (s); church; school.....
- Post office; wireless transceiver; cemetery.....
- Spot elevation in feet; accurate; approximate.....
- Bench mark; mud; gravel.....
- Sand; cliffs.....
- Sand ridges; sand dunes.....
- Relief shading.....
- Waterhole; water tank; dam; dry lake.....
- Lake, river or stream perennial.....
- Lake, river or stream intermittent.....
- Dam or weir; falls; rapids.....
- Drain or ditch perennial, intermittent.....
- Spring perennial, intermittent; ricefields.....
- Marsh or swamp.....

LEGEND

(P.D.) indicates position doubtful
(I.D.) indicates photo interpretation doubtful

- Highway; built-up area.....
- Road, sealed surface first class; route marker.....
- Road, sealed surface second class; mileage.....
- Road, loose surface all weather first class.....
- Road, loose surface all weather second class.....
- Road, loose surface dry weather.....
- Road, unimproved earth.....
- Bridge road; bridge railway.....
- Railway single track.....
- Station; siding; station with siding.....
- Telephone line; power transmission line.....
- Fence; stone wall.....
- Levee or dyke; quarry.....
- Mine; windpump; yard.....
- Building (s); church; school.....
- Post office; wireless transmitter; cemetery.....
- Spot elevation in feet; accurate; approximate.....
- Bench mark; mud; gravel.....
- Sand; cliffs.....
- Sand ridges; sand dunes.....
- Relief shading.....
- Waterhole; water tank; dam; dry lake.....
- Lake, river or stream perennial.....
- Lake, river or stream intermittent.....
- Dam or weir; falls; rapids.....
- Drain or ditch perennial, intermittent.....
- Spring perennial, intermittent; ricefields.....
- Marsh or swamp;.....

Kilometers 0 0.5 1 2 3 4 100 D

