

HRA 2013 OLD BP RALLY

Supplied Maps

Division Four

(Mildura to Jeparit)

This package consist of 8 pages including this page containing the following labelled maps:

100J

250H

100K

250 J

250K

100 L

100 M

Please check that you have a complete set.

LEGEND

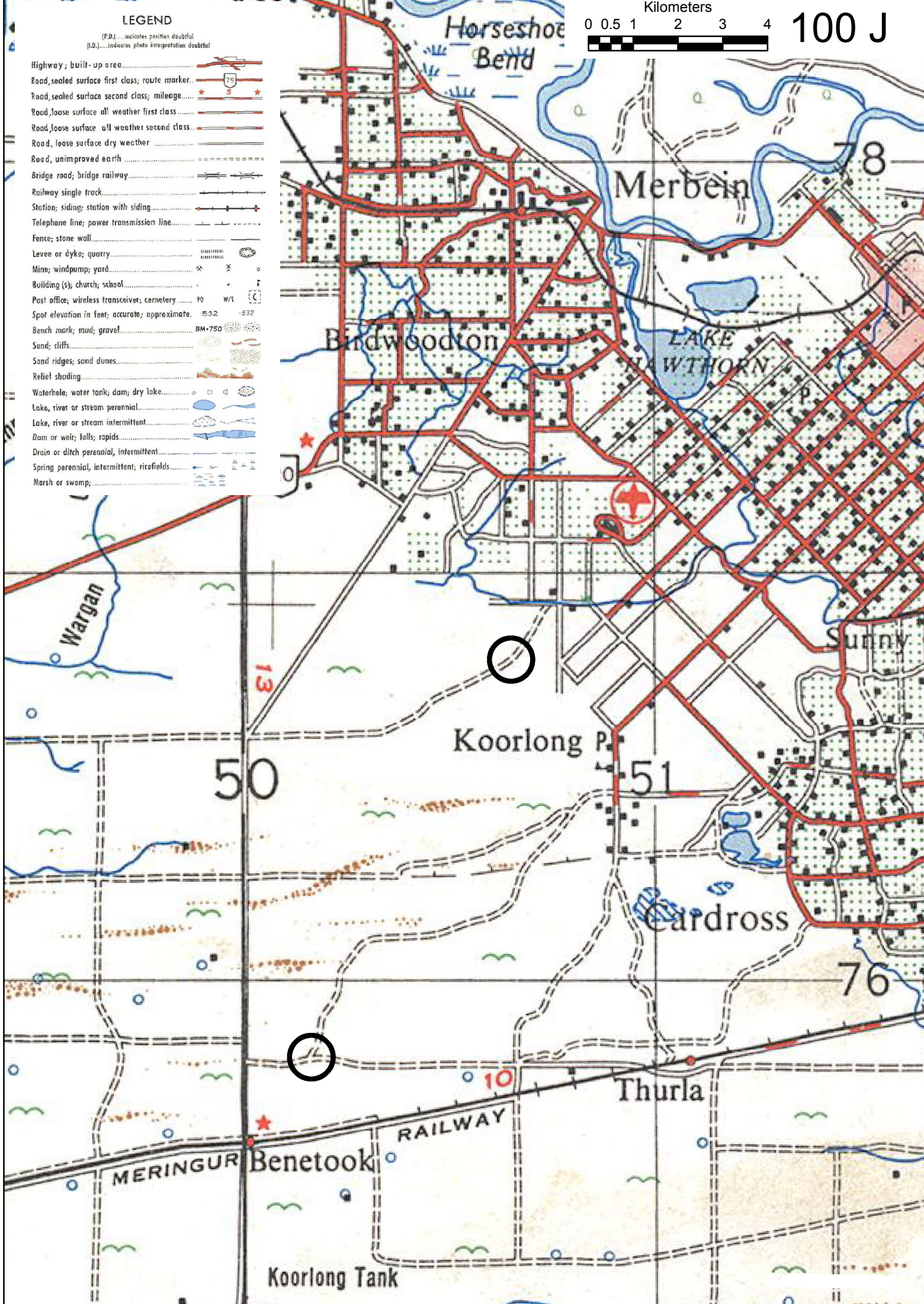
(P.D.)...indicates position doubtful
(I.D.)...indicates photo interpretation doubtful

- Highway; built-up area.....
- Road, sealed surface first class; route marker.....
- Road, sealed surface second class; mileage.....
- Road, loose surface all weather first class.....
- Road, loose surface all weather second class.....
- Road, loose surface dry weather.....
- Road, unimproved earth.....
- Bridge road; bridge railway.....
- Railway single track.....
- Station; siding; station with siding.....
- Telephone line; power transmission line.....
- Fence; stone wall.....
- Levee or dyke; quarry.....
- Mine; windpump; yard.....
- Building (s); church; school.....
- Post office; wireless transceiver; cemetery.....
- Spot elevation in feet; accurate; approximate.....
- Bench mark; mud; gravel.....
- Sand; cliffs.....
- Sand ridges; sand dunes.....
- Relief shading.....
- Waterhole; water tank; dam; dry lake.....
- Lake, river or stream perennial.....
- Lake, river or stream intermittent.....
- Dam or weir; falls; rapids.....
- Drain or ditch perennial, intermittent.....
- Spring perennial, intermittent; ricefields.....
- Marsh or swamp;.....

Kilometers



100 J



Thurla

Benetook

Koorlong P.

Cardross

Merbein

Birdwoodton

Horseshoe Bend

LAKE MAWTHORN

Sunny

MERINGUR

Koorlong Tank

RAILWAY

50

51

76

78

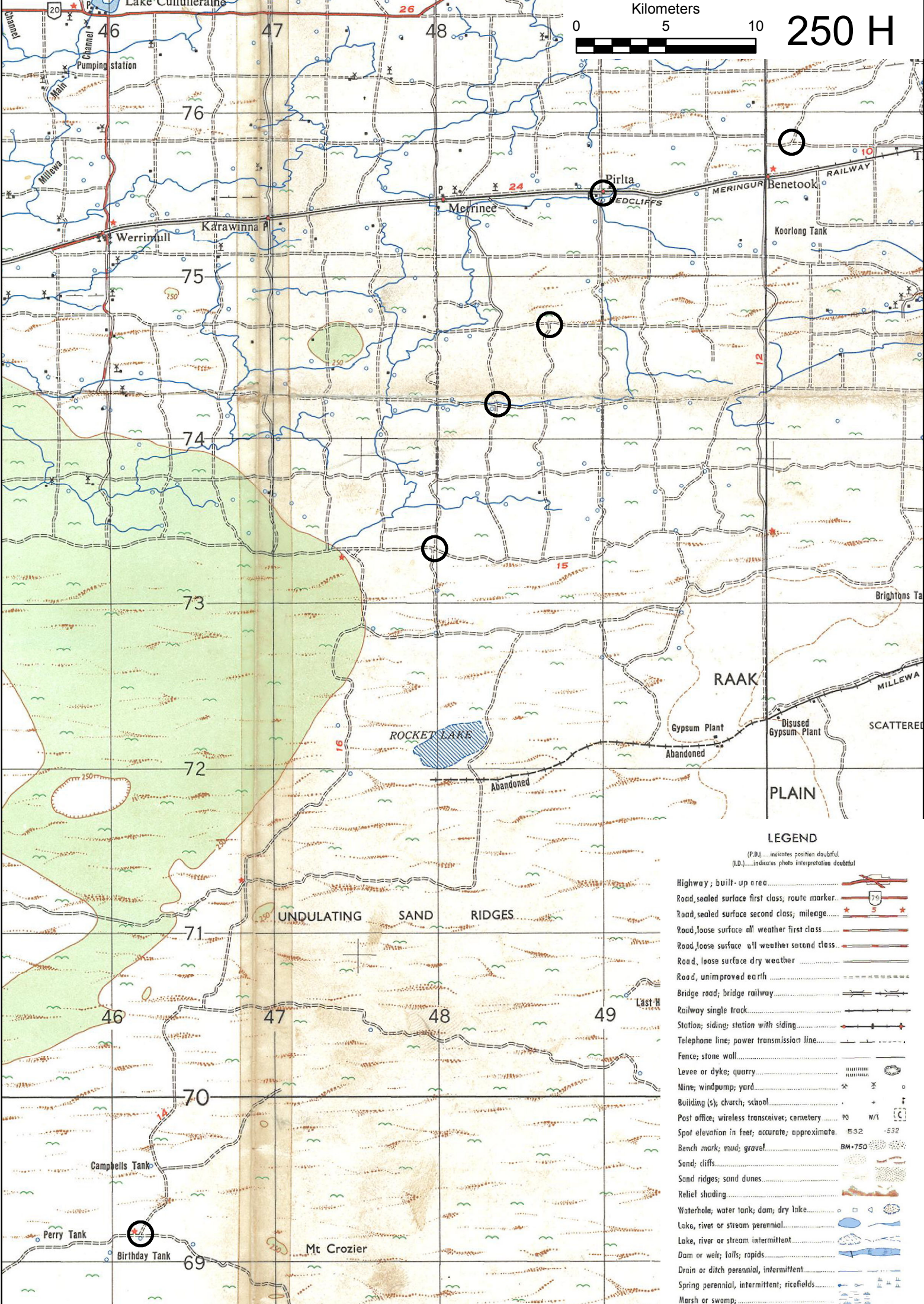
13

10

Kilometers



250 H



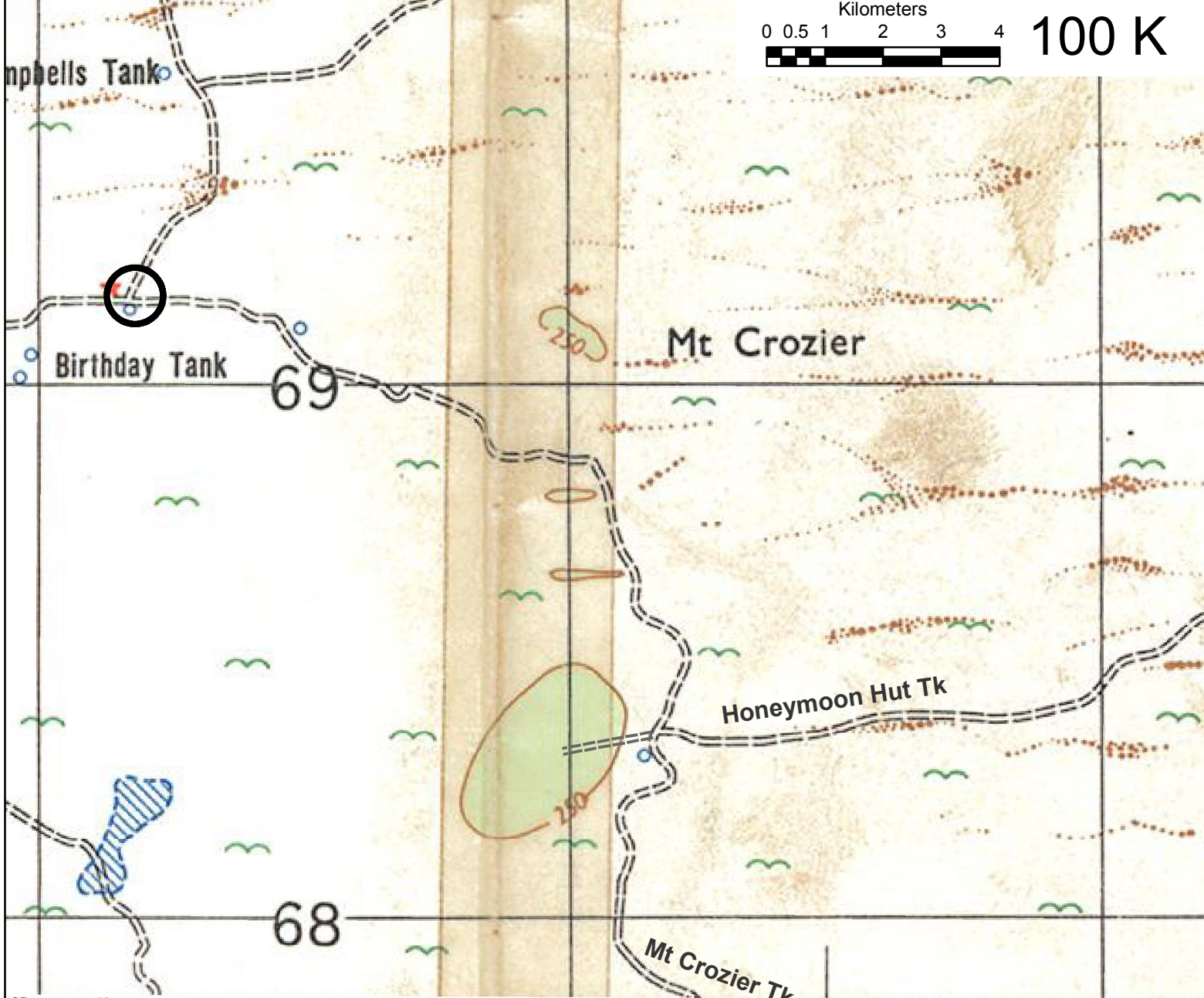
LEGEND

(P.D.) indicates position doubtful
(I.D.) indicates photo interpretation doubtful

- Highway; built-up area
- Road, sealed surface first class; route marker
- Road, sealed surface second class; mileage
- Road, loose surface all weather first class
- Road, loose surface all weather second class
- Road, loose surface dry weather
- Road, unimproved earth
- Bridge road; bridge railway
- Railway single track
- Station; siding; station with siding
- Telephone line; power transmission line
- Fence; stone wall
- Levee or dyke; quarry
- Mine; windpump; yard
- Building (s); church; school
- Post office; wireless transceiver; cemetery
- Spot elevation in feet; accurate; approximate
- Bench mark; mud; gravel
- Sand; cliffs
- Sand ridges; sand dunes
- Relief shading
- Waterhole; water tank; dam; dry lake
- Lake, river or stream perennial
- Lake, river or stream intermittent
- Dam or weir; falls; rapids
- Drain or ditch perennial, intermittent
- Spring perennial, intermittent; ricefields
- Marsh or swamp

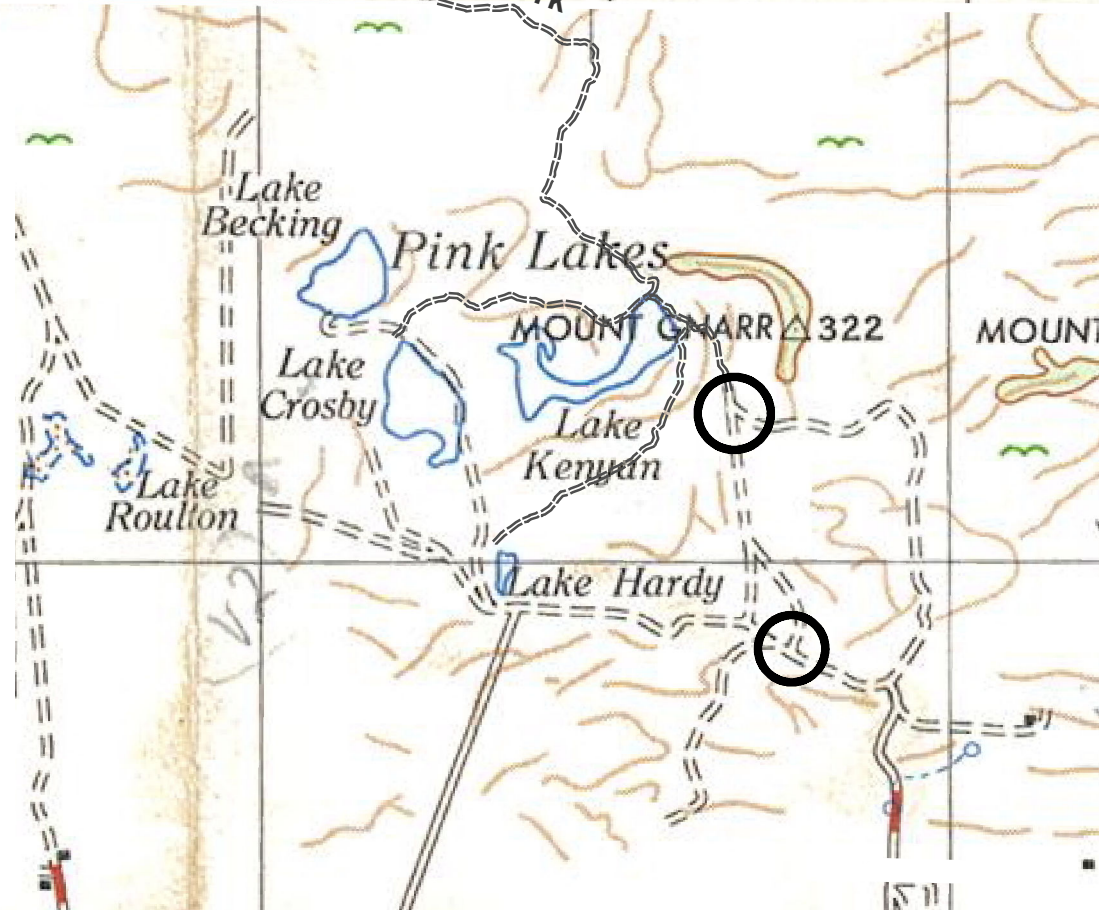


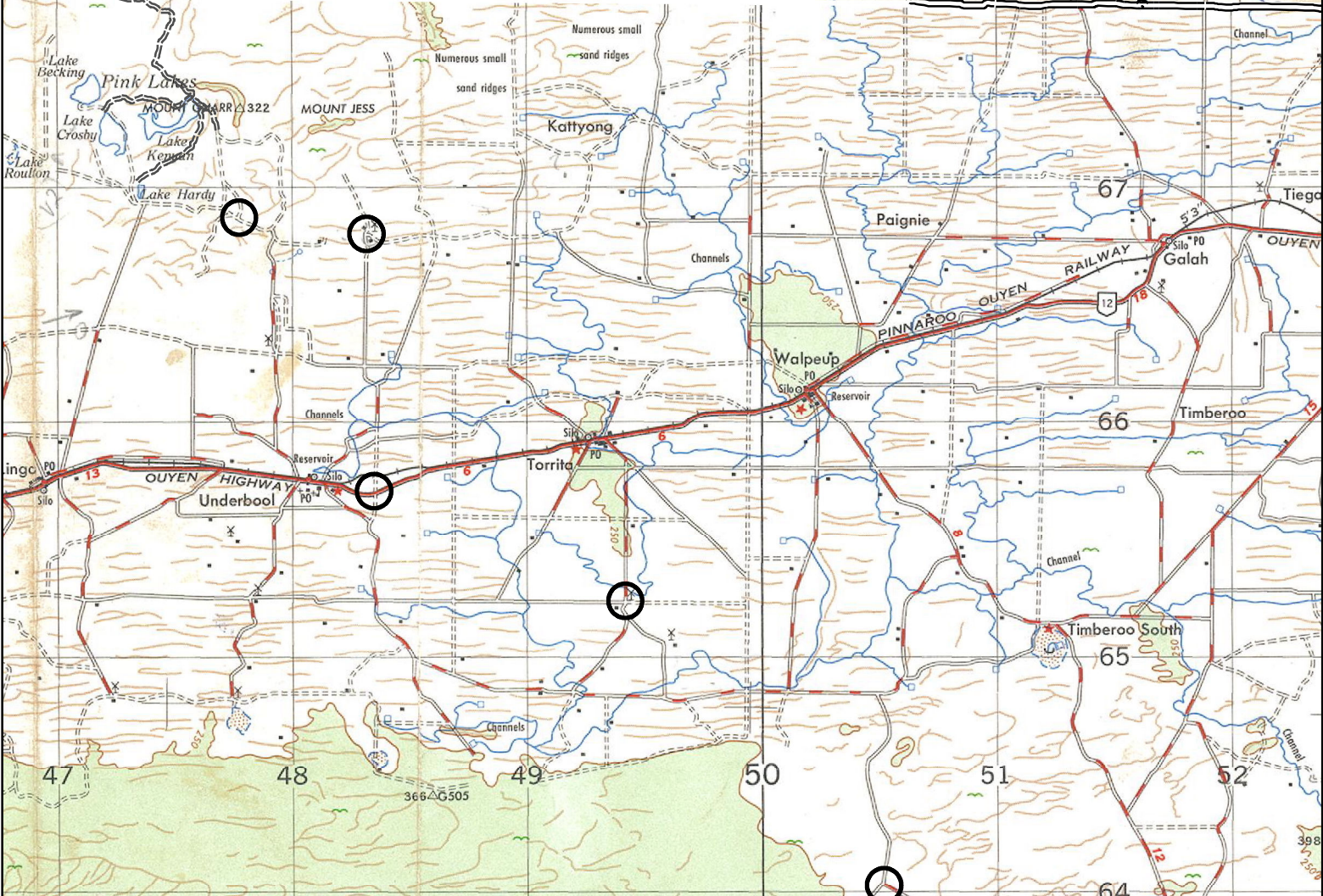
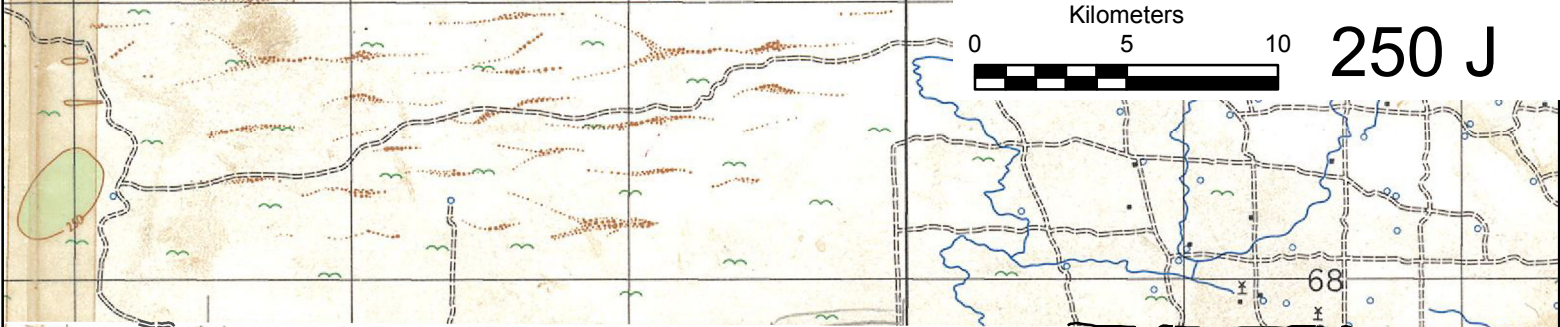
100 K



LEGEND
(P.D.)... indicates position doubtful
(I.D.)... indicates photo interpretation doubtful

Highway; built-up area	
Road, sealed surface first class; route marker	
Road, sealed surface second class; mileage	
Road, loose surface all-weather first class	
Road, loose surface all-weather second class	
Road, loose surface dry weather	
Road, unimproved earth	
Bridge road; bridge railway	
Railway single track	
Station; siding; station with siding	
Telephone line; power transmission line	
Fence; stone wall	
Levee or dyke; quarry	
Mine; windpump; yard	
Building (s); church; school	
Post office; wireless transceiver; cemetery	
Spot elevation in feet; accurate; approximate	
Bench mark; mud; gravel	
Sand; cliffs	
Sand ridges; sand dunes	
Relief shading	
Waterhole; water tank; dam; dry lake	
Lake, river or stream perennial	
Lake, river or stream intermittent	
Dam or weir; falls; rapids	
Drain or ditch perennial, intermittent	
Spring perennial, intermittent; ricefields	
Marsh or swamp	





LEGEND

(P.D.) indicates position doubtful
(I.D.) indicates photo interpretation doubtful

- Highway; built-up area
- Road, sealed surface first class; route marker
- Road, sealed surface second class; mileage
- Road, loose surface all weather first class
- Road, loose surface all weather second class
- Road, loose surface dry weather
- Road, unimproved earth
- Bridge road; bridge railway
- Railway single track
- Station; siding; station with siding
- Telephone line; power transmission line
- Fence; stone wall
- Levee or dyke; quarry
- Mine; windpump; yard
- Building (s); church; school
- Post office; wireless transceiver; cemetery
- Spot elevation in feet; accurate; approximate
- Bench mark; mud; gravel
- Sand; cliffs
- Sand ridges; sand dunes
- Relief shading
- Waterhole; water tank; dam; dry lake
- Lake, river or stream perennial
- Lake, river or stream intermittent
- Dam or weir; falls; rapids
- Drain or ditch perennial, intermittent
- Spring perennial, intermittent; ricefields
- Marsh or swamp

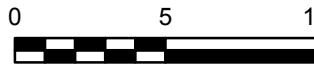


LEGEND

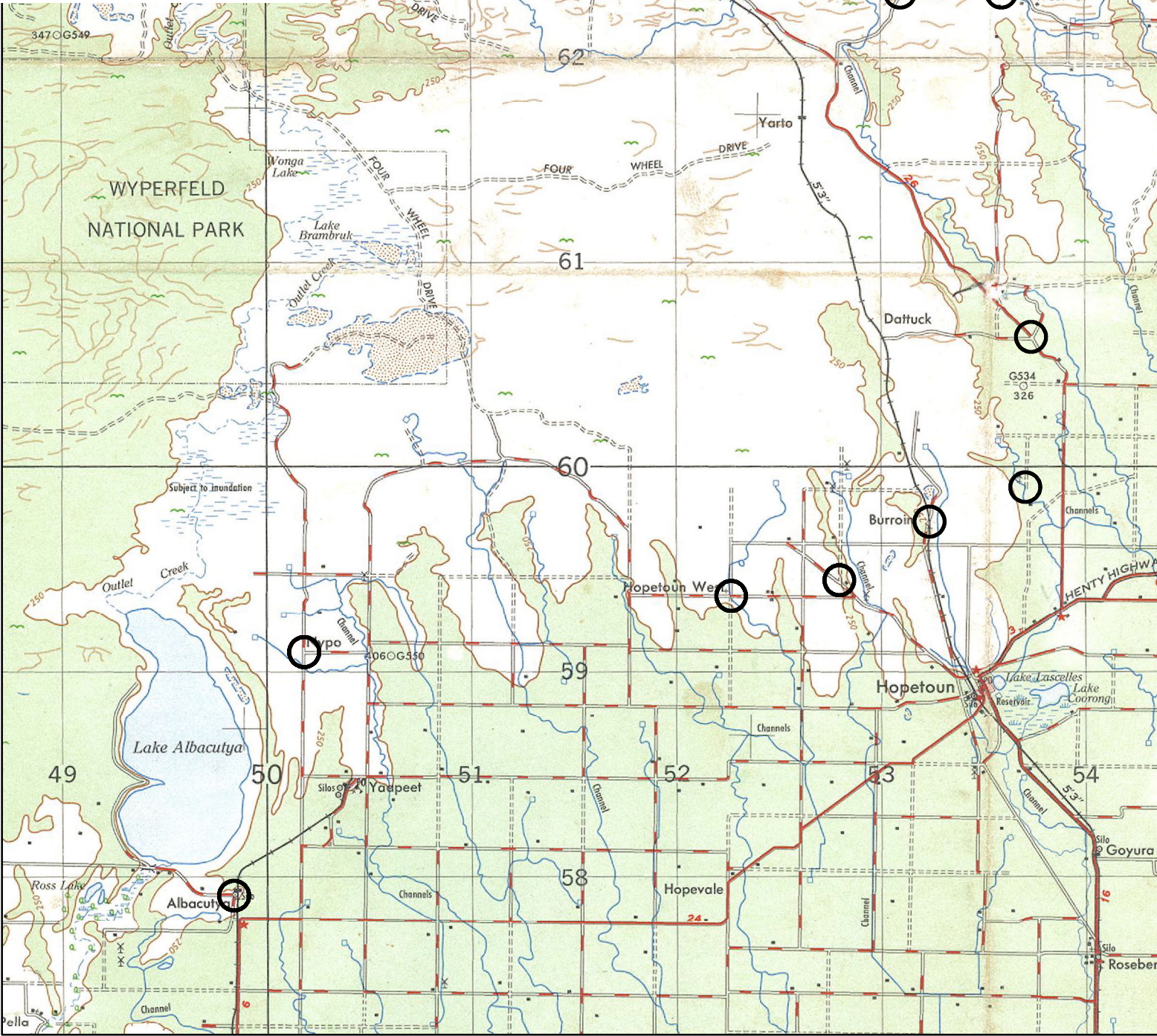
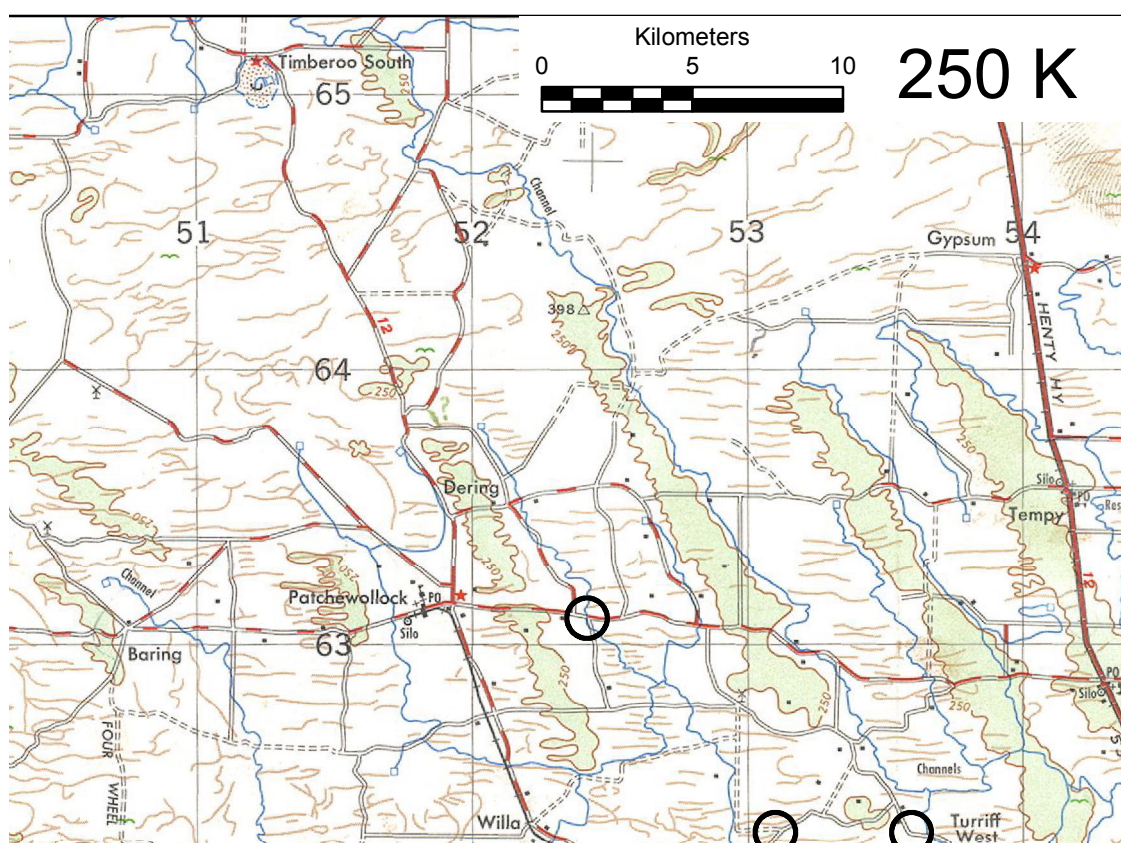
(P.D.)... indicates position doubtful
(L.D.)... indicates photo interpretation doubtful

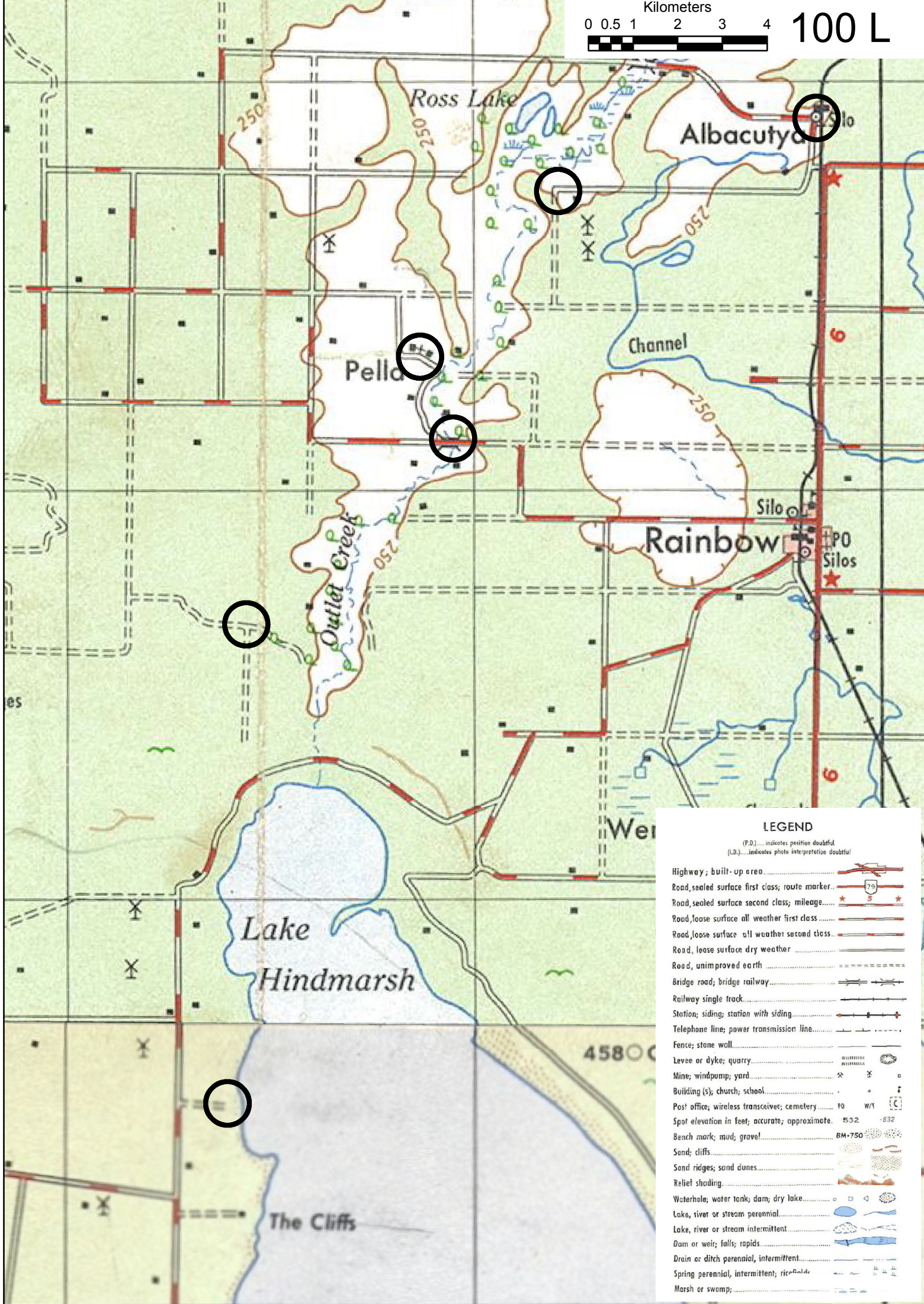
- Highway, built-up area
- Road, sealed surface first class; route marker
- Road, sealed surface second class; mileage
- Road, loose surface all weather first class
- Road, loose surface all weather second class
- Road, loose surface dry weather
- Road, unimproved earth
- Bridge road; bridge railway
- Railway single track
- Station; siding; station with siding
- Telephone line; power transmission line
- Fence; stone wall
- Levee or dyke; quarry
- Mine; windpump; yard
- Building (s); church; school
- Post office; wireless transceiver; cemetery
- Spot elevation in feet; accurate; approximate
- Bench mark; mud; grave
- Sand; cliffs
- Sand ridges; sand dunes
- Relief shading
- Waterhole; water tank; dam; dry lake
- Lake, river or stream perennial
- Lake, river or stream intermittent
- Dam or weir; falls; rapids
- Drain or ditch perennial, intermittent
- Spring perennial, intermittent; ricefields
- Marsh or swamp

Kilometers



250 K





LEGEND

(P.D.)... indicates position doubtful
(I.O.)... indicates photo interpretative doubtful

Highway, built-up area	
Road, sealed surface first class; route marker	
Road, sealed surface second class; mileage	
Road, loose surface all weather first class	
Road, loose surface all weather second class	
Road, loose surface dry weather	
Road, unimproved earth	
Bridge road; bridge railway	
Railway single track	
Station; siding; station with siding	
Telephone line; power transmission line	
Fence; stone wall	
Levee or dyke; quarry	
Mine; windpump; yard	
Building (s); church; school	
Post office; wireless transceiver; cemetery	
Spot elevation in feet; accurate; approximate	
Bench mark; mud; gravel	
Sand; cliffs	
Sand ridges; sand dunes	
Relief shading	
Waterhole; water tank; dam; dry lake	
Lake, river or stream perennial	
Lake, river or stream intermittent	
Dam or weir; falls; rapids	
Drain or ditch perennial, intermittent	
Spring perennial, intermittent; rice fields	
Marsh or swamp	

Kilometers



100 M

LEGEND

(P.D.)...indicates position doubtful
(I.D.)...indicates photo interpretation doubtful

- Highway; built-up area.....
- Road, sealed surface first class; route marker.....
- Road, sealed surface second class; mileage.....
- Road, loose surface all weather first class.....
- Road, loose surface all weather second class.....
- Road, loose surface dry weather.....
- Road, unimproved earth.....
- Bridge road; bridge railway.....
- Railway single track.....
- Station; siding; station with siding.....
- Telephone line; power transmission line.....
- Fence; stone wall.....
- Levee or dyke; quarry.....
- Mine; windpump; yard.....
- Building (s); church; school.....
- Post office; wireless transceiver; cemetery.....
- Spot elevation in feet; accurate; approximate.....
- Bench mark; mud; gravel.....
- Sand; cliffs.....
- Sand ridges; sand dunes.....
- Relief shading.....
- Waterhole; water tank; dam; dry lake.....
- Lake, river or stream perennial.....
- Lake, river or stream intermittent.....
- Dam or weir; falls; rapids.....
- Drain or ditch perennial, intermittent.....
- Spring perennial, intermittent; ricefields.....
- Marsh or swamp.....

