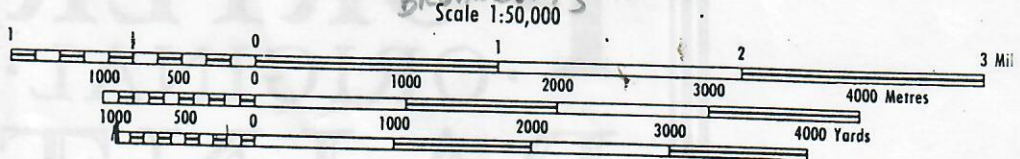
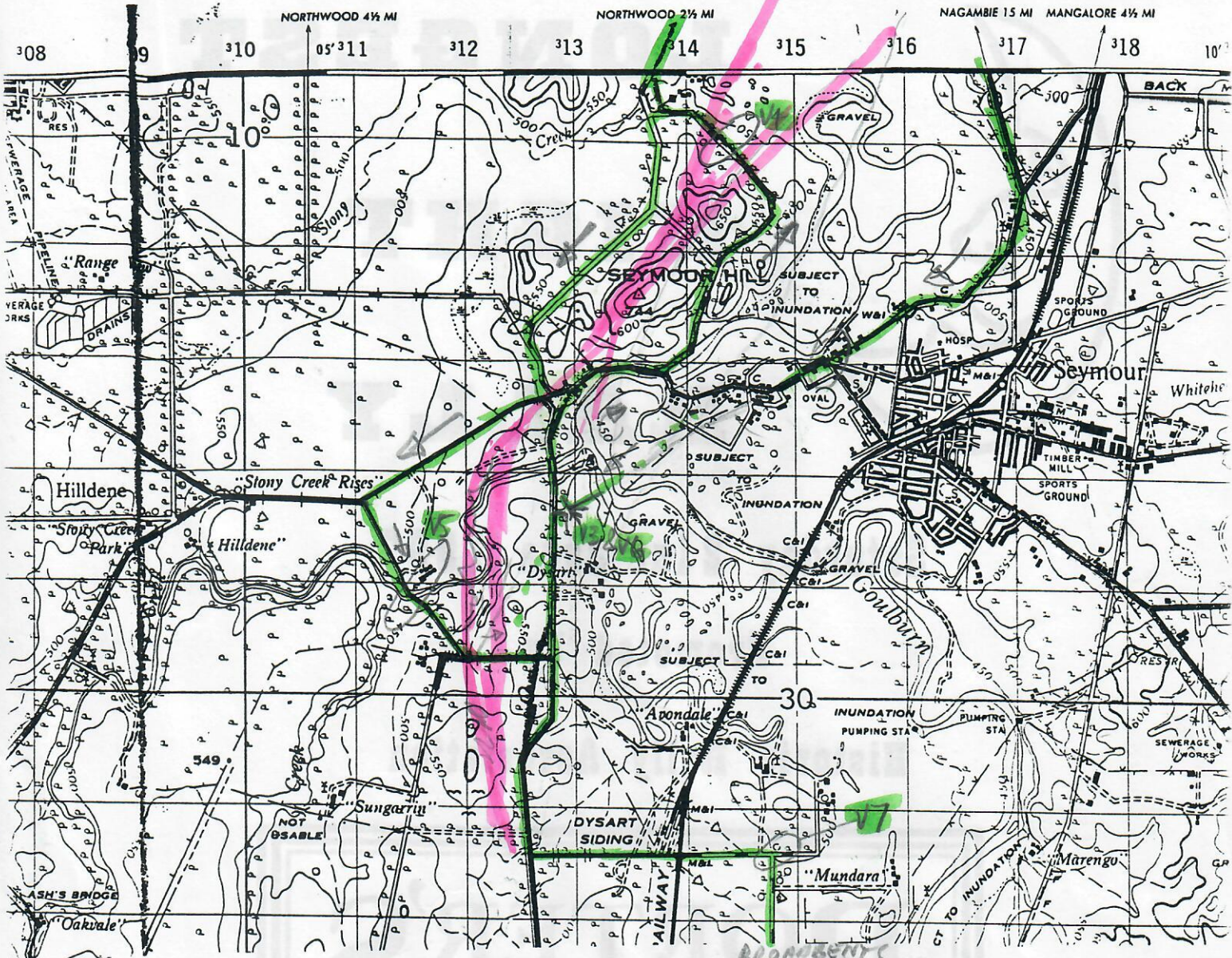


TALLAROOK

VIA 2



CONTOUR INTERVAL 50 FEET
VERTICAL DATUM IS BASED ON LOW WATER MARK, WILLIAMSTOWN

TRANSVERSE MERCATOR PROJECTION
HORIZONTAL DATUM IS BASED ON SYDNEY OBSERVATORY, LATITUDE 33°51'41.10" S LONGITUDE 151°12'17.85" E

BLACK NUMBERED LINES INDICATE THE 1,000 YARD TRANSVERSE MERCATOR GRID, ZONE 7 (AUSTRALIA SERIES), THE LAST THREE DIGITS OF THE GRID NUMBERS ARE OMITTED

Road, first class		
Road, second class		
Road, third class		
Road, fourth class		
Track, vehicular		
Track		
Railway multiple track		
Railway single track		
Railway station, siding, station with siding		
Tunnel, railway		
Telephone or telegraph line		
Power transmission line		
Bridge, ford		
Culvert, causeway, gate or cattle grid		
Wall, fence		

Prepared under the direction of the Chief of the General Staff, Australian Military Forces, by the Royal Australian Survey Corps as part of the national mapping programme. Compiled in 1961 from Australia 1:63,360 series, AAS, Tallarook 1955. Distributed to the Defence Services by the Royal Australian Survey Corps and to all other map users by the Department of National Development.